



CHAMPION

***Proudly built at
these locations:***

Athens, Texas
800-738-0392

Chandler, Arizona
877-738-8838

Lake City, Florida
800-589-8942

Lindsay, California
800-451-4951

Salisbury, North Carolina
800-749-5203

Sangerfield, New York
800-937-3911

Weiser, Idaho
877-540-4906

York, Nebraska
800-752-7906



Invest in the Best Park Models, Cabins and Lofts!



www.athensparkhomes.com



Innovation in Recreational Living

New Athens Park Series

Athens Park Homes 2015 Models Lindsay, CA

Model	Width	Sq. Ft.	Description
APH-501FP	11'2"	366	Galley kitchen w/ 6' front porch
APH-502	11'2"	399	Galley kitchen with box bay front - Opt. Island & Opt. loft
APH-503	11'2"	399	Galley kitchen with box bay front - Opt. Island & Opt. loft
APH-504	11'2"	399	U-Kitchen with box bay front - Loft Optional
APH-505	11'2"	399	Galley kitchen with box bay front - Loft Optional
APH-506	11'2"	399	L-kitchen with box bay front - Opt. Island & Opt. Loft
APH-507	11'2"	399	Angled kitchen with box bay front - Optional Island
APH-508	11'2"	399	Eat in kitchen with box bay front - Loft Optional
APH-509	11'2"	399	Galley kitchen w/ single loft, angled stairs w/box bay front
APH-510FD	11'2"	399	Galley kitchen w/ roll in shower & handicap toilet w/grab bars and 6 foot front porch-Handicap Friendly Model
APH-511	11'2"	399	2 Bedroom front and rear
APH-512	13'4"	399	2 BR / 2 Bath front and rear
APH-513FD	13'4"	399	2 BR (loft w/ladder is opt.) with L-kitchen and 6' porch
APH-514	14'4"	399	L-kitchen with 6' front porch - Loft Optional
APH-515	14'4"	399	Open kitchen with 6 foot front porch
APH-516	14'4"	399	L-kitchen with side porch and opt. 10 foot front porch

Special Models

APH-140	11'2"	399	2 Room unit
APH-134	11'2"	399	3 Room unit



Because Athens Park Homes has a continuous product updating and improvement process, prices and specifications are subject to change without notice or obligation.

**Athens Park Homes - 2015
Park Models Standards**

FEATURES		Athens Park Series
Construction		
1	CODES	ANSI 119.5
2	Inspection Sticker	Standard RVIA
3	Floor Joists	2x6 - 16" on Center
4	Steel I-Beam	10" I-beam with 99.5" Spread
5	Axles	3 Axles - Add Axle w/Loft or Porch
6	Sidewall	90" (2x4) - 16" on Center
7	Interior Walls	2x3 / 2x4 - 16" on Center
8	Ceiling	Vaulted
9	Eaves	Approximately 12" F & R
10	12" Eaves on Sides	Optional
11	Porches	Standard some models-per print
12	Floor	19/32" T & G - OSB
13	2 Window Box Front Bay	Std Most Models
14	4 Window Angled Front Bay	Optional
15	Rear Bay	Rear Box Optional
16	Side Bay	N/A
17	Underbelly	Sheptex
18	Removable Hitch	Std
19	Roof Pitch	6/12 , 3/12 on 13'4", 14'4"
Thermal		
1	Wall Insulation	R-13
2	Floor Insulation	R-11
3	Roof Insulation	R-22
Floor Covering		
1	Carpet	Simply Stated-Bedroom, Loft, Stairs
2	Carpet Pad	7/16" Rebond
3	Linoleum	T/O Except Bedroom & Loft
Bath		
1	Sinks	Porcelain
2	Vanities	34" High
3	Drawer bank next to sink	Standard in some models-per print
4	Faucets	Brush Nickel
5	Counter Top	Laminate
6	Counter Top Backsplash	6" tile backsplash
7	Counter Top Edge	Laminate
8	Toilet	Round
9	Towel bar/Tissue holder	Standard-Installed
10	Bath Exhaust Fan	Standard
11	Bath Mirror	Over Vanity
12	Bath Tub/Shower	48" Shower w/Glass Enclosure (Most Models)
13	Medicine Cabinet	Optional
Kitchen		
1	Sinks	Stainless steel
2	Faucets	Brush Nickel / SLF and Sprayer
3	Island	Optional - Some Models
4	Counter Tops	Laminate
5	Counter Top Backsplash	6" tile backsplash
6	Counter Top Edge	Laminate
7	Backsplash Behind Range	Optional-with tile backsplash
8	18" Dishwasher	Optional
9	Refrigerator	18' FF
10	Range	Full Size Gas Range
Bedroom		
1	Mirrored Closet Doors	Standard - Most Models
2	Night Stands Each Side of Bed	Standard - Most Models
3	Shelves	Optional
4	Reading light	Optional
5	Chest of Drawers	Standard - Most Models
6	Drawers Under closet	N/A
Plumbing / Heating		
1	Furnace	40,000 BTU gas furnace-per print
2	Water Heater	20 Gallon - Electric - Exterior Door
3	Ductwork	Floor
4	Exterior Water Faucet	Optional
5	Water Shut-Off Valves	Standard
Utility		
1	Plumb/Wire for Washer and Dryer	Optional - Some Models

**Athens Park Homes - 2015
Park Models Standards**

FEATURES		New Athens Park
Cabinets		
1	Soffit above all O/H Cabinets	N/A
2	Cabinet Door / Stiles	Pearwood MDF
3	Base Cabinet System	Drawer Bank
4	Flip Down Sink Trays in Kitchen	Standard
5	Roll Out Under Counter Waste Basket	N/A
6	Overhead Lined Cabs T/O	Pearwood MDF
7	Center Shelves OH & Base Cabs	Pearwood MDF
8	Refrigerator Cabinet	Standard
9	Glass Inserts in Overhead Cabinets	Optional
10	Adjustable Shelves	Optional
Interior		
1	Wall Coverings	1/2" Sheet rock
2	Tape & Texture	Standard with Bull Nose Corners
3	Ceiling	Tape and Texture
4	Wainscot	Optional
5	Hardware	Brushed Nickel
6	Pocket Doors	Standard some models
7	Pantry/Closet Shelving	Wire Vented Shelving
8	Ceiling Trim	Optional
9	Window Trim	Cased Windows
10	Door Trim	2 1/2" White
11	Interior Doors	6 Panel
12	Door Stops	On Floor
13	Baseboard	3" White Base Boards
Electrical		
1	100 Amp Box - 50 Amp Service	Standard
2	25 Foot Power Cord	Standard on 50 AMP
3	100 Amp Service (No power cord)	Optional
4	Water Heater Shut Off Switch-Kitchen	Standard
5	Exterior Receptacle	1 Standard
6	Heat Trace Receptacle by Water Inlet	1 Standard
7	Reading Light Over Night Stand	Optional
8	AC Disconnect	Optional
9	Ceiling Fan	Optional
10	Light Switches	Rocker
11	Phone & TV Jacks	Optional (1 each std. in lofts)
12	Wire & Brace	Optional
Lighting		
1	Dinning Room	13" Madonna Light/ Brushed Nickel
2	Master Bath	Bar Light over Medicine Cabinet/ Nickel
3	LR	13" Madonna Light/ Brushed Nickel
4	Bedrooms ALL	13" Madonna Light/ Brushed Nickel
5	Kitchen	13" Madonna Light/ Brushed Nickel
6	Front Exterior Light	Brushed Nickel Lantern Type
7	Rear Exterior Light	Brushed Nickel Lantern Type
Exterior		
1	Facia	Cement Board
2	Soffit	Ventilated Cement Board
3	Shingles	Composite 25 YR
4	Siding	Cempanel Vertical Siding
5	Siding Backer	House Wrap
6	Exterior Window Trim	4" Window Trim
7	Flying Gable Roof on Hitch End	N/A
8	Single or Double Lofts	Optional - Most Models
9	Clerestory Dormers	Optional
10	Prismatic Dormers	N/A
11	Front & Rear Porches	Front Std -Some Models-per print
12	Front Door	36 "x 80" Steel 9 Lite or Patio Sliding -per print
13	Rear Door	RV Type- Some Models - Per Print
Windows		
1	Windows	Dual Pane Single Hung Low E
2	Pentizoid Window on Hitch End	Standard - per print
3	Drapes	Valances
4	Mini Blinds	2" Fauxwood
5	Vertical Blind at Patio Door	Standard per Model
6	Window Sills/Facing	Cased Windows
Other		
1	Fire Extinguisher	Standard
2	Smoke Detectors	Standard



PARK MODEL OPTION LIST

EXTERIOR OPTIONS	
Flip end to end or rotate	
Omit Porch on Park Model	
Increase Roof Snow Loads	
Upgrade 30 Year Architectural Shingles	
Green Architectural Shingles ILO Standard	
Metal roof (per sq. ft.)	
Under slung Axles w/ Low Profile Tires	
Add a window 48x58 or Smaller	
Upgrade window to bigger size (Ex. 36x58 to 46x58)	
Relocate Window or Door	
Trapezoid Windows 24x29x21 (each)	
Trapezoid Windows 20x18x11 (each)	
Front Bay with Trapezoid Windows	
Metal Underbelly Wire Mesh	
Mini Dormer on 6/12 Roof Pitch Sidewall	
Full 12" Eaves	
12" Eaves Hitch & Rear + 6" Eaves both Sides	
Shutters (each)	
OSB / Underlayment / Lap Siding T/O (Horizontal Lap ILO Vertical)	
Baked- On Cedar Stain Siding Per Lineal Foot	
2 window clearstory	
3 window clearstory	
4 window clearstory	
Raise The Roof with 4 Transom Windows (Loft Rafters NL)	
Front Porch (per sq. ft.)	
Rear Porch (per Sq. ft.)	
Recessed Entry	
Craftsman style porch	
Extra Axle	
Solar Tube (Not Available in Metal Roof)	
Add side bay with 3 windows	
2x6 Sidewall with R-19 Insulation	
R-33 In Floor Per Lineal Foot	
R-30 Ceiling Insulation	
INTERIOR OPTIONS	
Single Storage Loft with 9' Sidewall	
Double Storage Loft 9' Sidewall	
Optional Interior Paint Color	
New Day Carpet Per Sq. Yard	
Soft Sensation	
Adaptation Carpet Per Sq. Yard	
Undertones Carpet Per Sq. Yard	
Go Softly Carpet Per Sq. Yard	
FHA Carpet Pad	
Omega 16"x16" Squares Per Room(where carpet is std.)	
Insulate Interior wall(each)	
Wood Window Sills Per Window(Sills Only)	
SPF window trim & casing T/O	
Wood look wainscot (Paneling)	
Wood look wall from floor to ceiling lid (Paneling)	
Wood Finished Ceiling (Paneling)	
Mirrored Closet Doors with Drawers Below Closet	
Mirrored closet door with built in chest and drawers below full width	

APPLIANCE OPTIONS	
Under Counter Refrigerator	
Ice maker for standard refrigerator	
Plumb for icemaker	
30" free standing gas range replacing 2 Burner cook top	
Electric range replacing standard gas	
Smooth Top Electric Range	
Plumb for gas range	
Install Dishwasher	
Microwave Over Range ILO Standard Range hood	
Microwave for counter top	
Prep for Washer and Dryer (stackable)	
Install Stackable Washer and Gas Dryer	
Install Stackable Washer and Electric Dryer	
Black Appliances	
Garbage Disposal Installed	
Relocate Water Heater	
Relocate Furnace	
ELECTRICAL OPTIONS	
Run 5 wire thermostat wire	
Prep for Outside Air with Outlet	
OMIT 40,000 BTU gas furnace	
Wire for Ac (Comes with Breaker & Wires)	
Prep for Ac (Comes with Cutout & recept)	
100 amp electrical service	
Ceiling fan with light	
Ceiling Fan w/ Light and Dbl Switch	
Ceiling fan prep / includes 2 switches	
Prep only for paddle fan	
Bathroom heat fan light	
"J" Box with switch	
Phone jack (each)	
TV jack (each)	
Extra exterior electrical outlet	
Extra Recessed Can Light	
Set of 4 Recessed Can Lights	
2 bulb exterior motion light (each)	
Quick disconnect for A/C Isolated 20 amp	
36' power cord ILO 25'	
36' power cord	
50' power cord	
Deluxe Chandelier In Dining Room	

CABINETRY AND MOLDING	
Alder Shaker cabinets ILO Pearwood MDF	
Beechwood cabinets ILO Pearwood MDF	
Hickory Cabinets ILO Pearwood MDF	
3 door cabinet with hardwood cabinetry	
3 door Cabinet with MDF	
Linen cabinet over commode	
Tile 12" x 12" counter top in kitchen	
Chest of Drawers	
Pocket Door ILO Passage Door	
Entertainment Center with Phone / TV / Electric	
Corian ® Counter Tops	
Corian ® Counter Tops with Corian ® Backsplash	
FURNITURE	
Queen Pillow Top Mattress Only Dimension 60" X 80"	
Upgraded Queen Pillow Top Mattress Dimension 60" x 80"	
Add Queen Foundation & Frame	
Queen Short Euro Top Mattress Only Dimension 60" x 74"	
Upgraded Queen Short Pillow Top Matress Dimension 60" x 74"	
Add Queen Short Foundation & Frame	
LiftNStor Queen Storage Bed-(Does Not Include Mattress)	
LiftNStor Queen Short Storage Bed-(Does Not Include Mattress)	
Drop Leaf Dinette With 2 Chairs-Single Pedestal	
Additional Chairs-Each-Will Match Above Table	
Zero Wall Recliner- Mocha-Café or Sage	
Chairside End Table-Brown,Theo Brown,Almost Black Birch,OakVeneers	
66" Full 5" Mattress Short Sleeper Sofa	
Short Sofa or Loveseat	
King LiftNStore Bed (Does Not Include Mattress)	

PLUMBING OPTIONS	
PEX Plumbing	
Duct Free Split Air System	
8000 BTU Wall Mounted AC Unit	
12,000 BTU Wall Mounted AC Unit	
Park Pac AC	
27" Electric Fireplace	
Baseboard Heater	
Omit Furnace	
40 Gal Gas Water Heater	
30 Gal Electric Water Heater	
30 Gal Gas Water Heater	
Electric Tankless Water Heater	
Tankless Water Heater (exterior mount)	
Outside water faucets (each)	
Pull-out Faucet with Sprayer (kitchen)	
Relocate Gas Inlet to Other Than Water Heater Location	
Plumb for onsite sink under porch	
Porcelain Kitchen Sink ILO Standard	
9" Deep Acrylic Kitchen Sink ILO Standard	
BATHROOM OPTIONS	
Wood Trim Around Mirror	
54" tub/ shower	
54" Shower	
Add Bank of Drawers (where possible)	
One Piece 60" Tub / Shower ILO Standard (where possible)	
Add glass enclosure to tub or shower (if not Standard)	
Hi-Rise Toilet	
Stainless Steel Grab Bars (ea.)	
Special Needs Shower (Where Possible)	
Add 1/2 bath where applicable	
DOORS	
Craftsman style exterior door ILO standard	
Add a 9-Lite Cottage Door (not replacing anything)	
Add a Sliding Glass Door (not replacing anything)	
Add a Sliding Glass Door ILO Window or Door	
French Single Door with Internal Blinds ILO	
French Door replacing SGD (no internal blinds)	
French Dbl. Door replacing SGD (with internal blinds)	
French Dbl. Doors with Internal Blinds (not replacing anything)	
Relocate Door	
Real Wood Interior Door	
Passage Door ILO Pocket	
Pocket Door ILO bypass door	

2014 Park Home Furniture That Fits!

Table & Chairs



48" Single-Pedestal Drop Leaf Table w 2 Chairs. Additional chairs are available.

Chair Side End Tables



13" Wide Chairside End Table. 3 Models and 5 Veneers to choose from.

Recliners



Zero Wall Recliners-32" Wide, place 1" from wall. Available in Café-Mocha-Sage.

LiftnStor Beds



Queen Short LiftnStor Bed w Queen Short Mattress (60" x 74")

Queen LiftnStor Bed w Queen Mattress (60" x 80")

The [Trilogy Collection](#) is available in Queen, Full or Twin Sleepers. The collection features our renowned foam cushions, pillow backrests and bolster pillows, inside and outside padded arms and laminated hardwood frames.

66" Sofas That Fit!



Galaxy 66" No Sag Sofa! Our #1 Seller!

Full Size Sleeper Sofas



Galaxy Mocha 66" Sofa Full Sleeper w 5" ISM



Upgraded 66" Sofa Full Sleeper w 7" ISM

Custom frame & fabric combinations are available, including leather, just call for more info!

Athens Park Series



"Innovation in
Recreational Living"

Standard Features

Energy Saving Comfort Features:

Insulated tilt and clean single hung Low E windows w/grids
36x80 Nine Lite steel or Patio sliding door - Per print
24x76 Gunslot rear door - Some models
R-22 Fiberglass insulation in roof
R-11 Fiberglass insulation in the sidewalls and floors.
Vented attic with vapor barrier
Fire extinguisher
40,000 BTU gas furnace w/ auto ignition - most models

Heavy Duty Exterior Construction Features:

6 Foot covered front deck - Some models
2 Window box bay - Some models
Pentzoid window on hitch end - most models
Heavy asphalt/fiberglass 25 year shingles
2x6 floor and 2x4 sidewall construction - 16" O.C.
Trussed roof rafters
Full length 10" steel "I" - beam frame
Cempanel Fiber-Cement siding by James Hardie
High density Sheptex (rodent proof) underbelly
Detachable hitch

Heavy Duty Interior Construction Features:

90" Sidewall height w/ extra high vaulted ceiling
Tape and textured sheetrock walls
Textured Ceiling
5/8" OSB T&G floor decking
Sealed OSB at entry doors and plumbing locations
Cased windows throughout

Kitchen Features:

18 cu.ft. Refrigerator
Full size gas range
Power range hood and light
Beautiful wood cabinet doors and drawer fronts
Flip down sink trays in kitchen
Lined O/H Cabinets

Hidden cabinet door hinges
Premium metal drawer guides and rollers
Deep Stainless Steel Kitchen Sink
High pressure laminate countertops
Laminate Beveled edging with 6" Tile Backsplash

Bathroom Features:

One piece 48" fiberglass shower - most models
China lavatory sink
Metal faucet
Porcelain house type toilet
Mirrored medicine cabinet
Installed paper holder and towel bar

Bedroom Features:

Built in chest of drawers
2- Nightstands - most models
Mirrored closet doors
Plush carpet with 7/16 inch rebond pad

Convenience Features:

ANSI 119.5 coded - RVIA inspected
50 Amp Electrical Service with pigtail
20 gallon electric water heater
No wax linoleum flooring throughout except bedroom
Easy touch rocker light switches
Exterior GFCI 110 volt receptacle
Smoke detector
Shut off valves throughout
Deluxe overhead lighting
Attractive patio light
Deluxe valances
2" blinds throughout
Entertainment center for wall hung TV-most models

Popular Options

Clerestory dormers	Microwave oven
Lofts	Skylights
Washer/dryer	Cabin features
Electric fireplace	

Athens Park Homes

840 W Palm Ave
Lindsay, Ca 93247
800-451-4951
559-242-5121

www.athensparkhomes.com

REDMAN  HOMES.

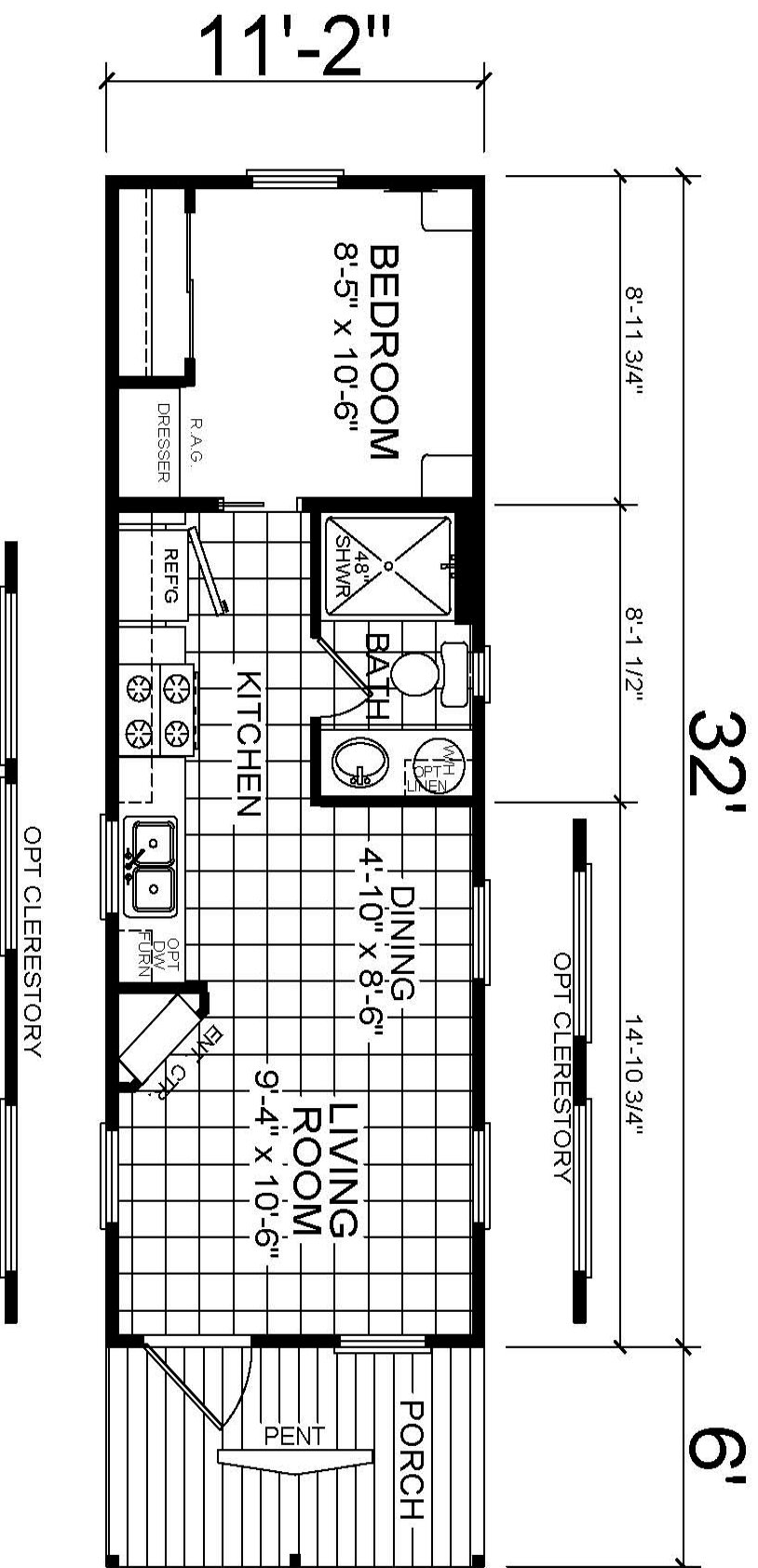


Building Quality Park Model RV's for over 9 Years!

7/21/2014

Prices and specifications are subject to change without notice

Athens Park Series



Model 501 - 366 Sq. Ft.

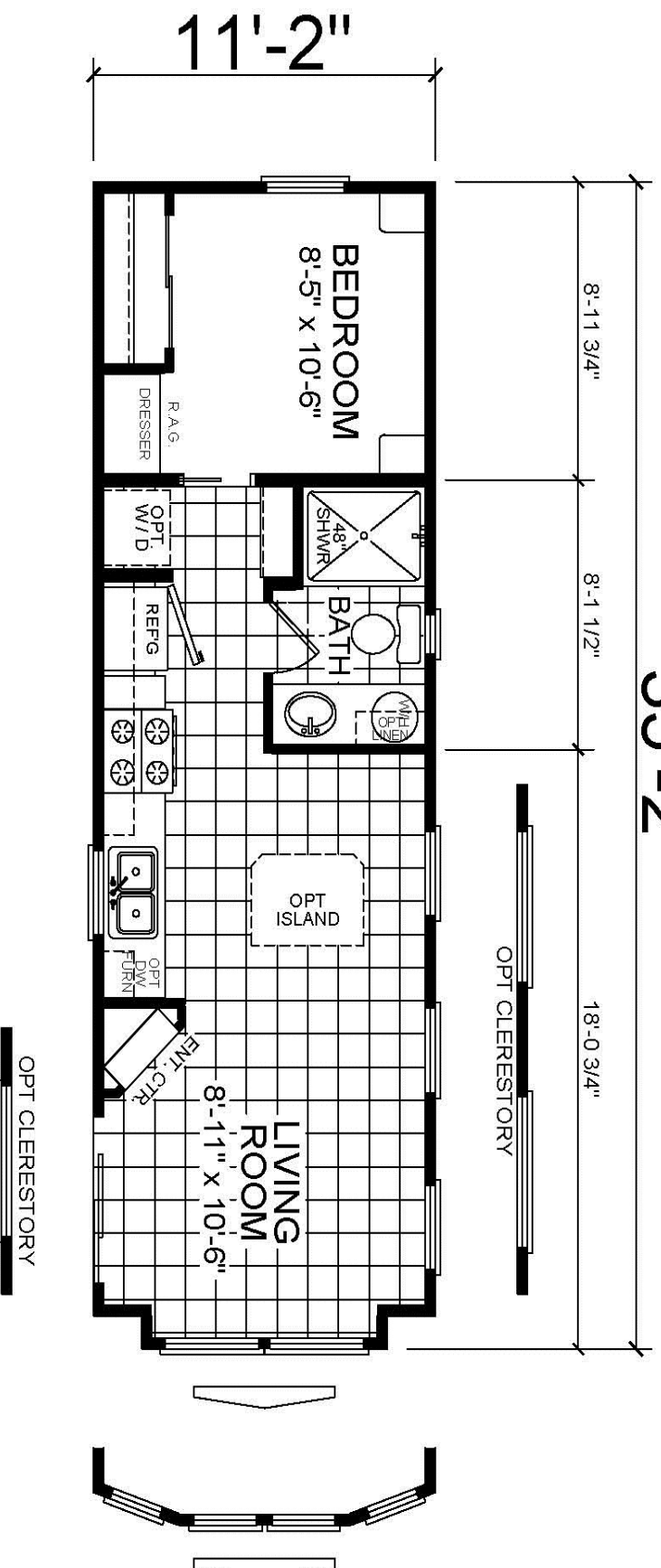
REDMAN HOMES.





Athens Park Series

35'-2"



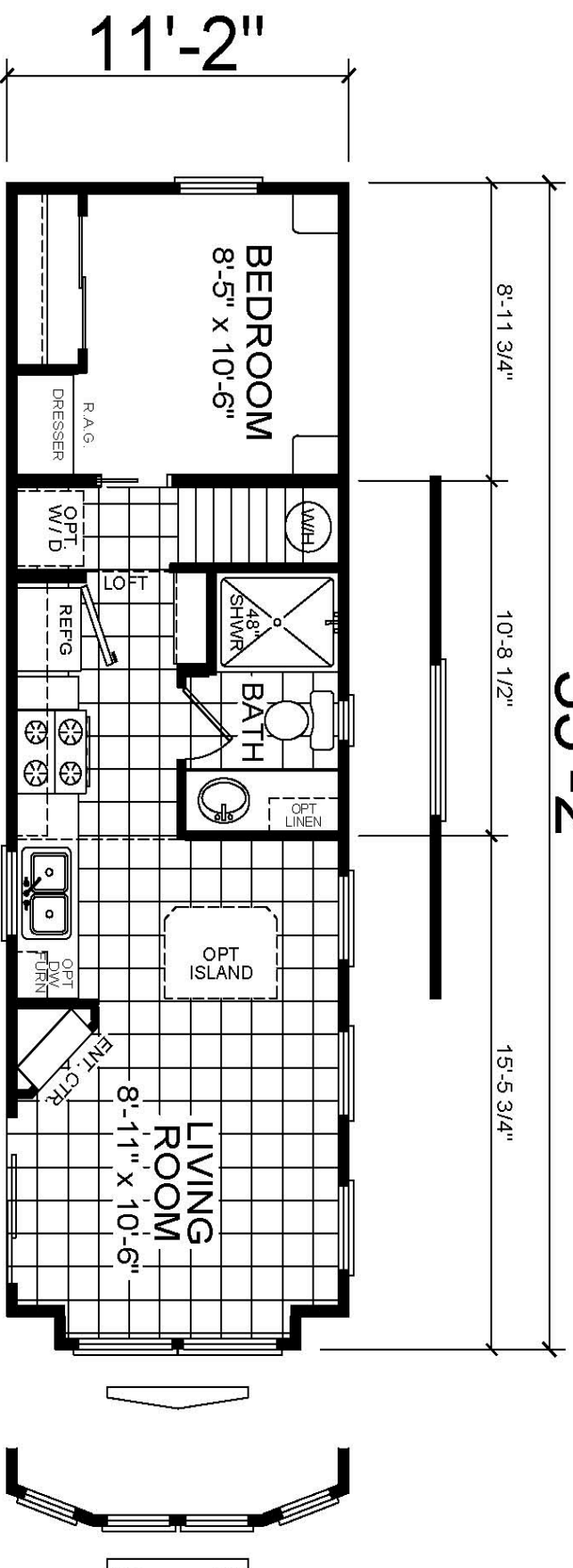
Model 502 - 399 Sq. Ft.





Athens Park Series

35'-2"

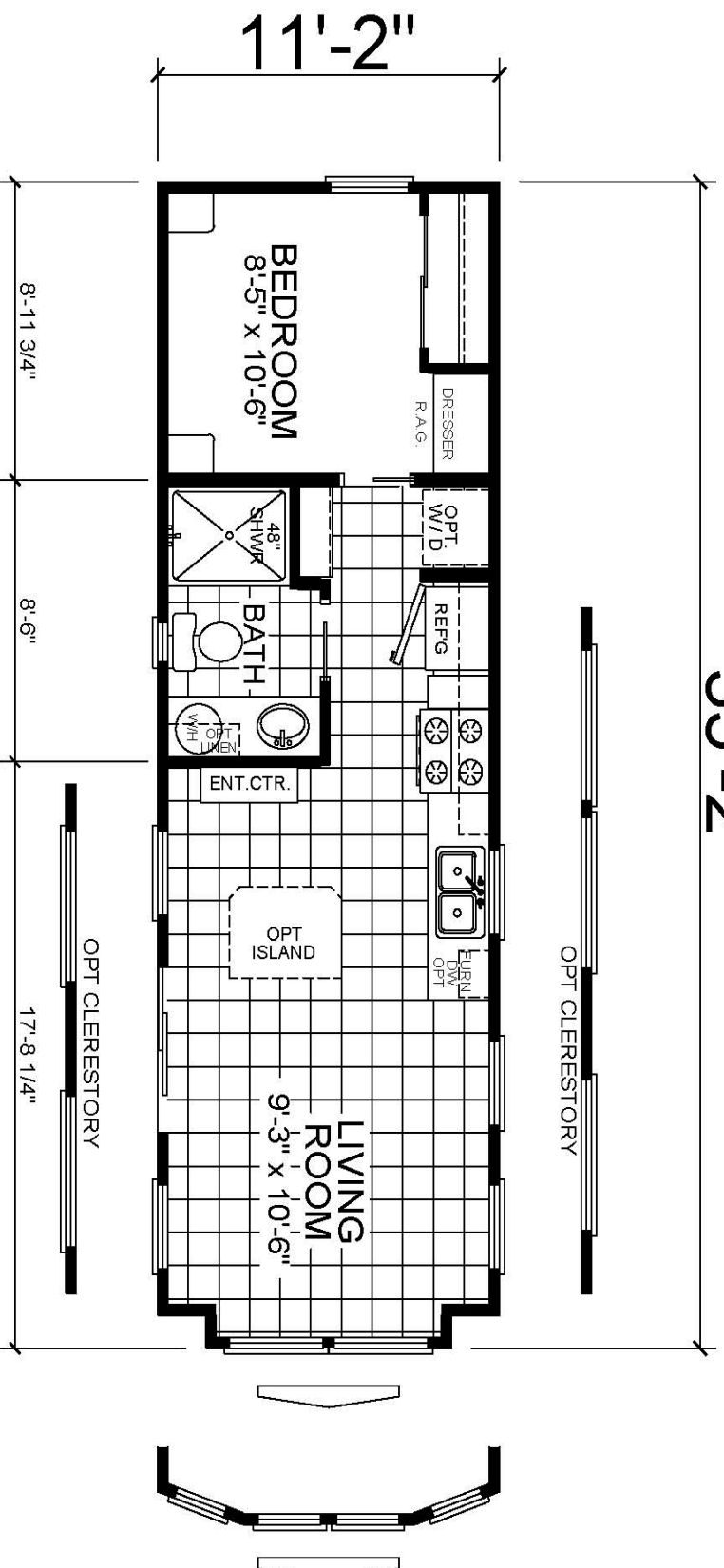


Model 502 Loft-399 Sq. Ft.



Athens Park Series

35'-2"



Model 503-399 Sq. Ft.

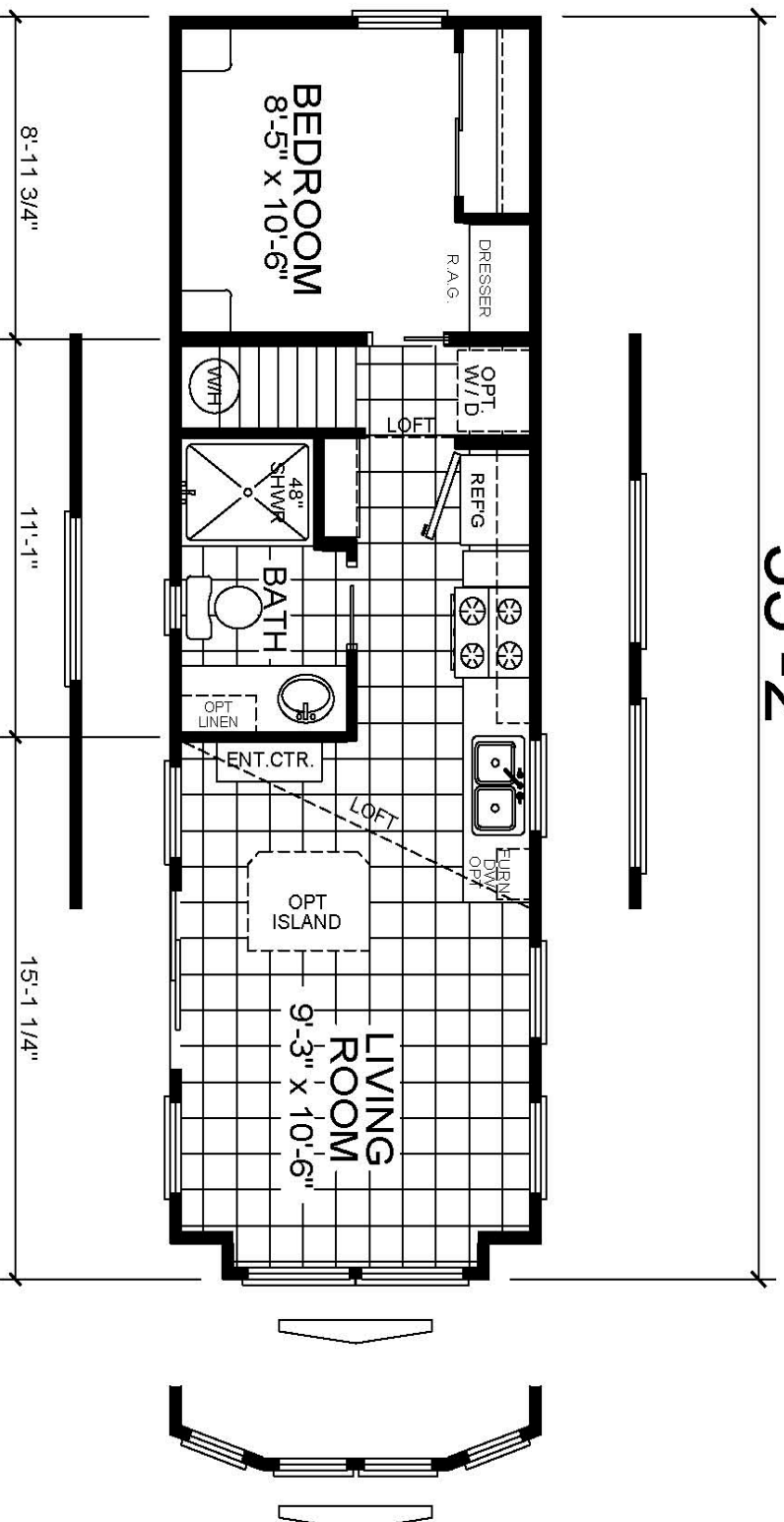
REDMAN HOMES.

CHAMPION®
MANUFACTURED BEAUTIFULLY™

Athens Park Series

35'-2"

11'-2"



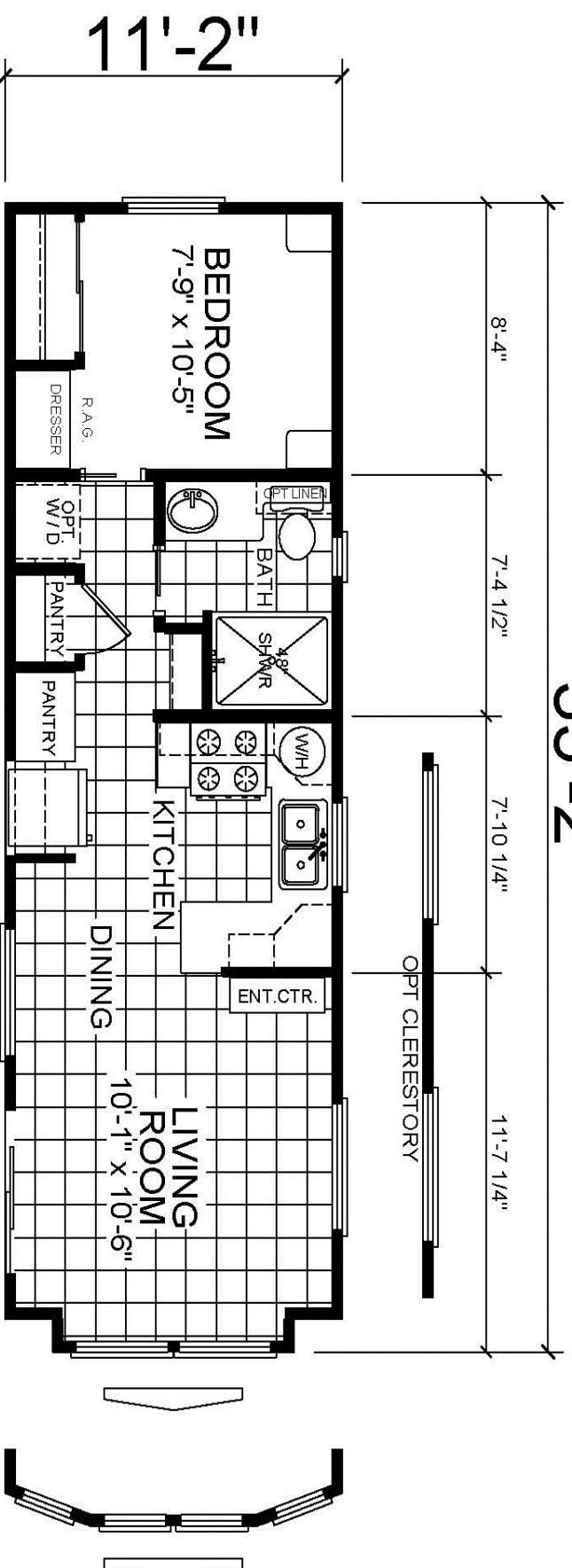
Model 503 Loft-399 Sq. Ft.

REDMAN HOMES

CHAMPION®
MANUFACTURED BEAUTIFULLY™

Athens Park Series

35'-2"



Model 504 - 399 Sq. Ft.

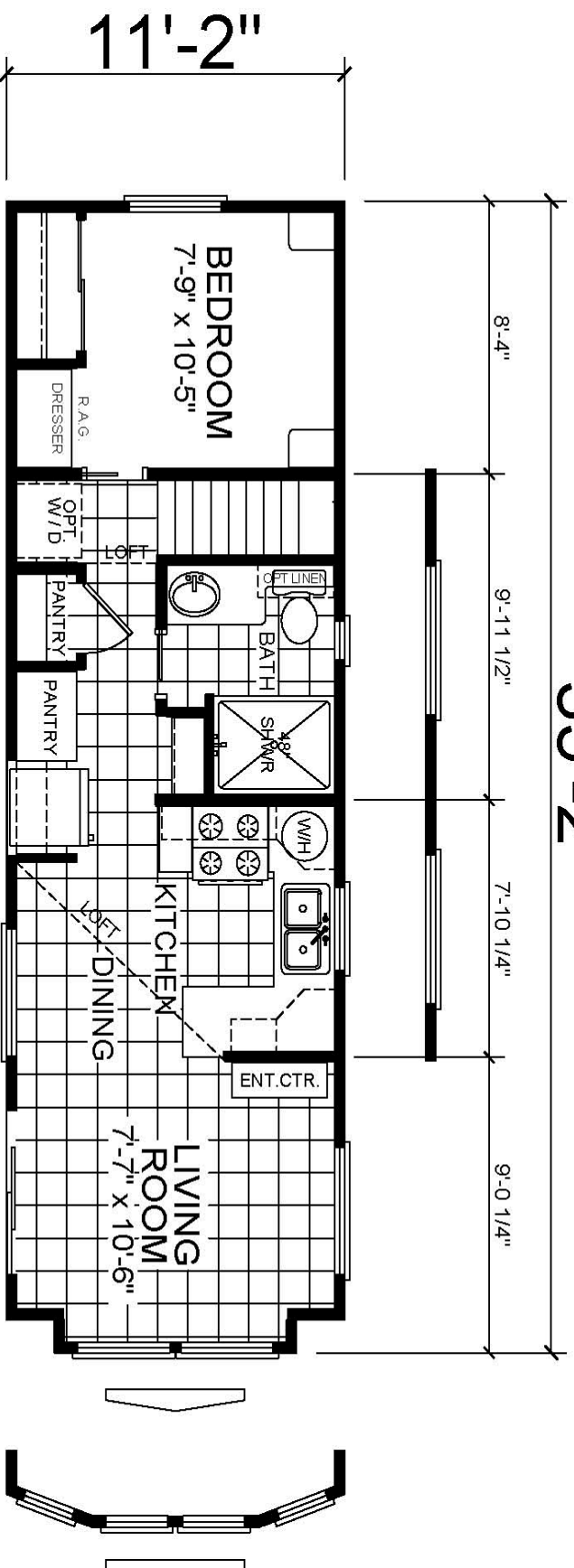
REDMAN HOMES.





Athens Park Series

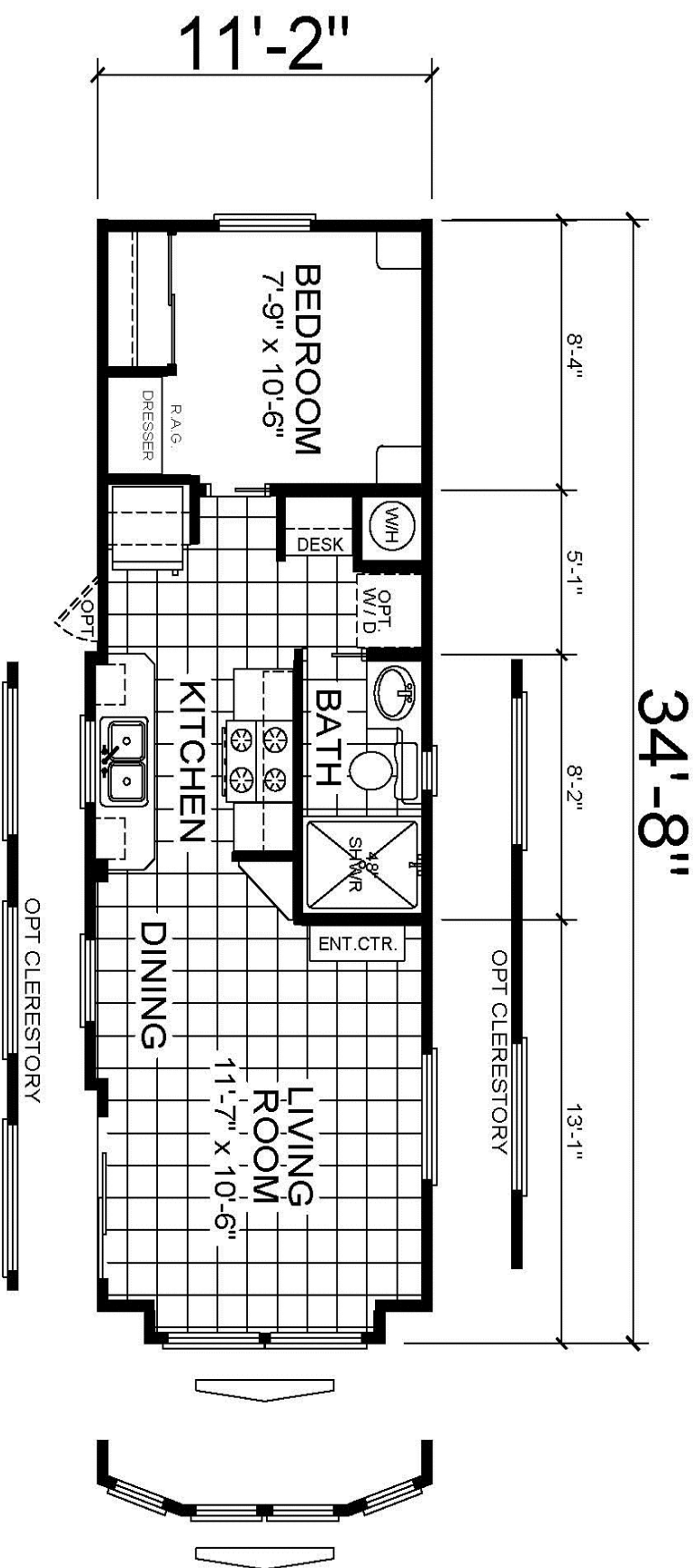
35'-2"



Model 504 Loft-399 Sq. Ft.



Athens Park Series



Model 505 - 399 Sq. Ft.

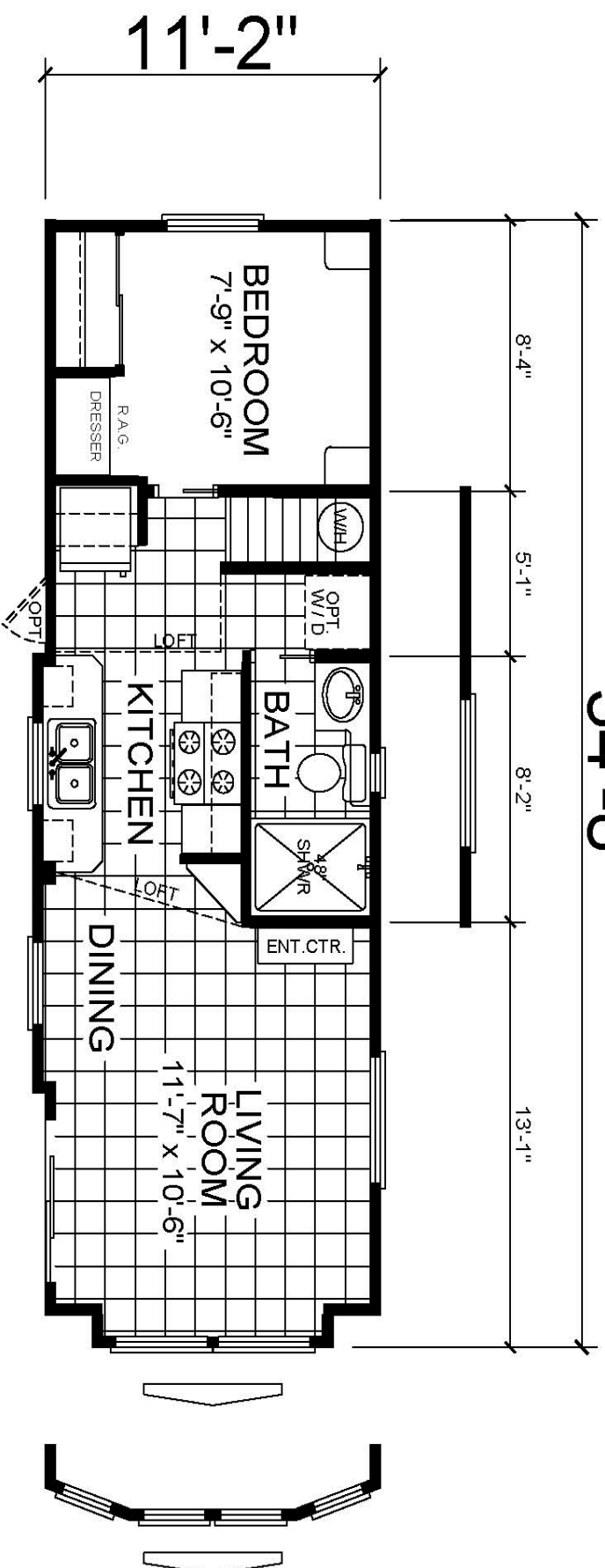
REDMAN HOMES.

CHAMPION®
MANUFACTURED BEAUTIFULLY™



Athens Park Series

34'-8"

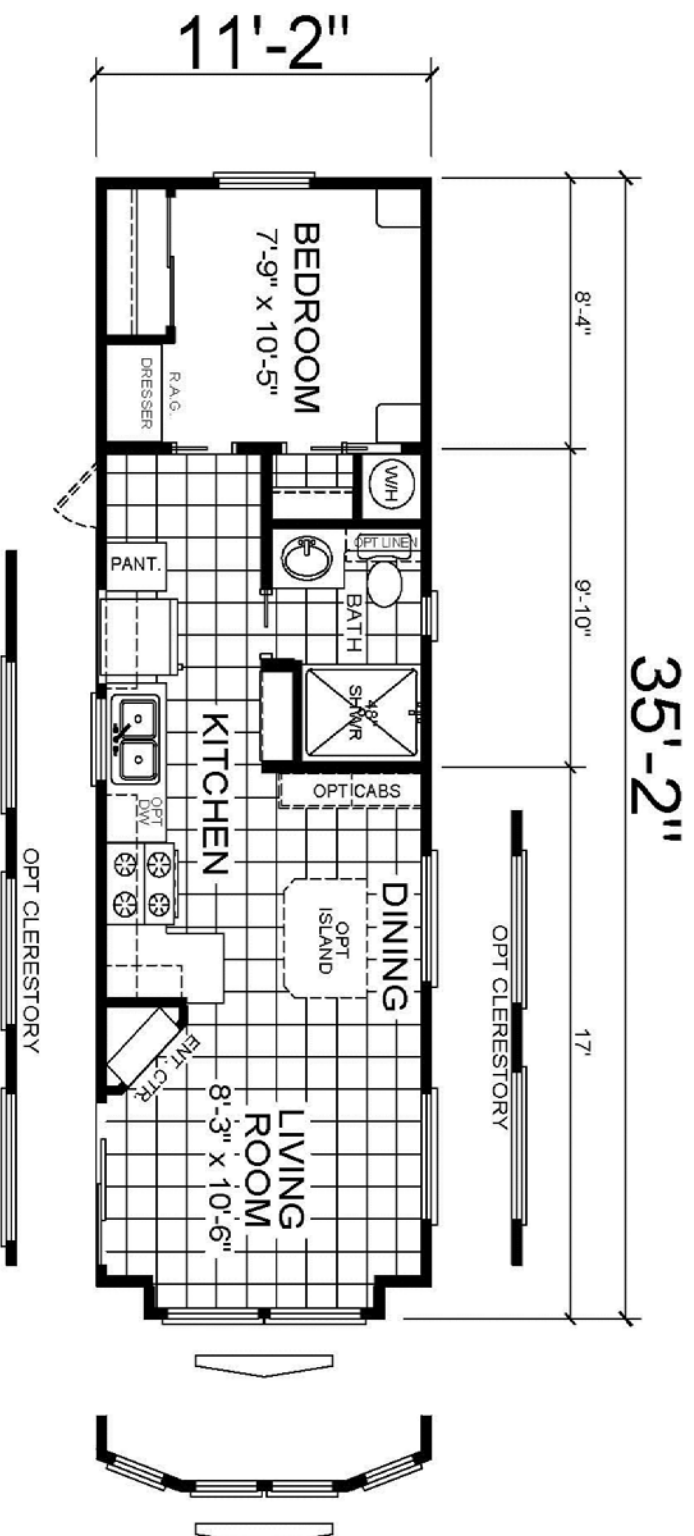


Model 505 Loft-399 Sq. Ft.



Due to continuous improvements, product specifications are subject to change without notice

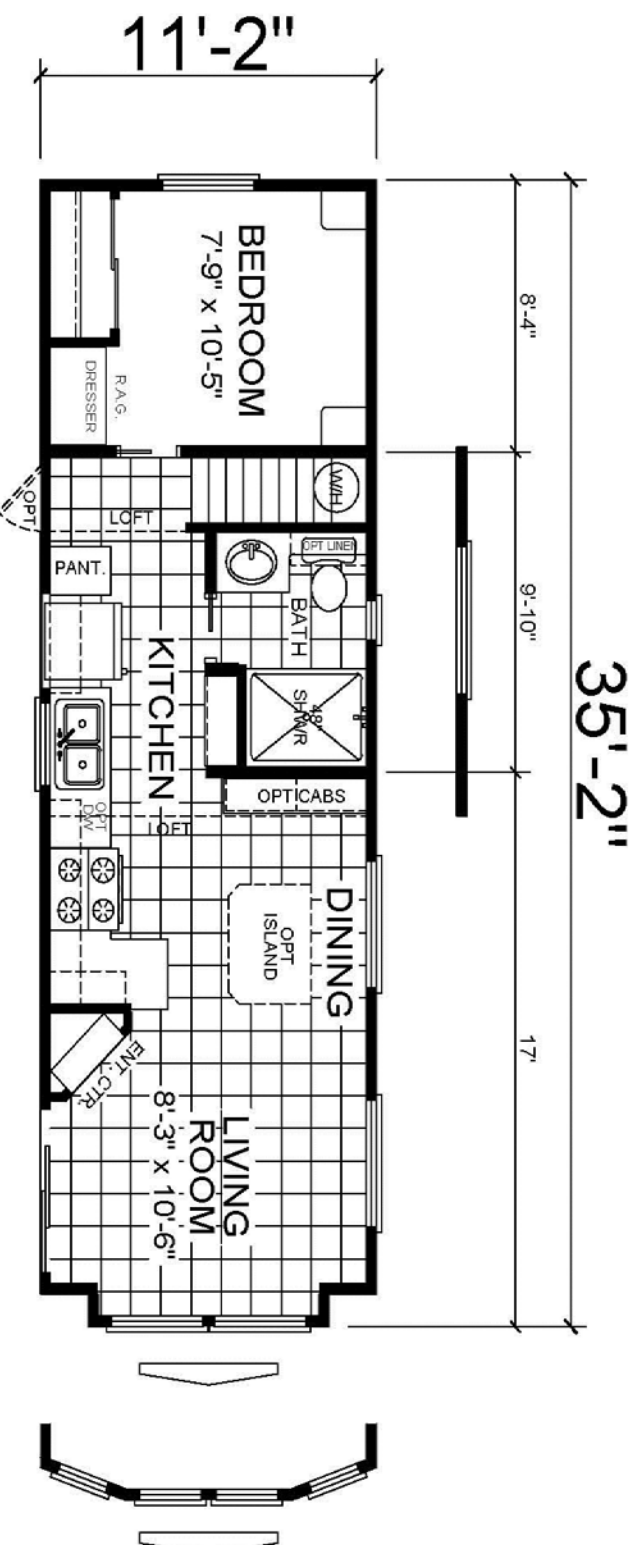
Athens Park Series



Model 506 - 399 Sq. Ft.



Athens Park Series



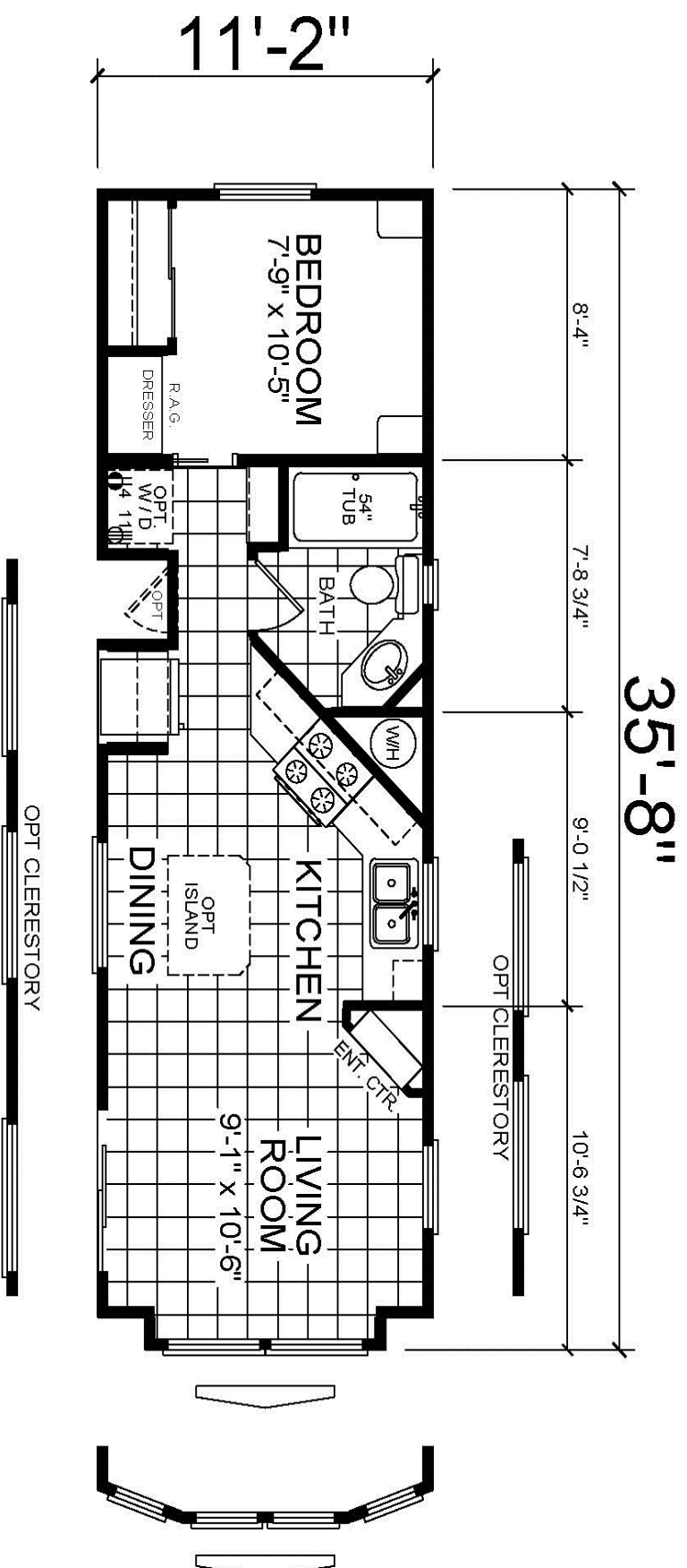
Model 506 Loft-399 Sq. Ft.

REDMAN HOMES.

CHAMPION®
MANUFACTURED BEAUTIFULLY™



Athens Park Series



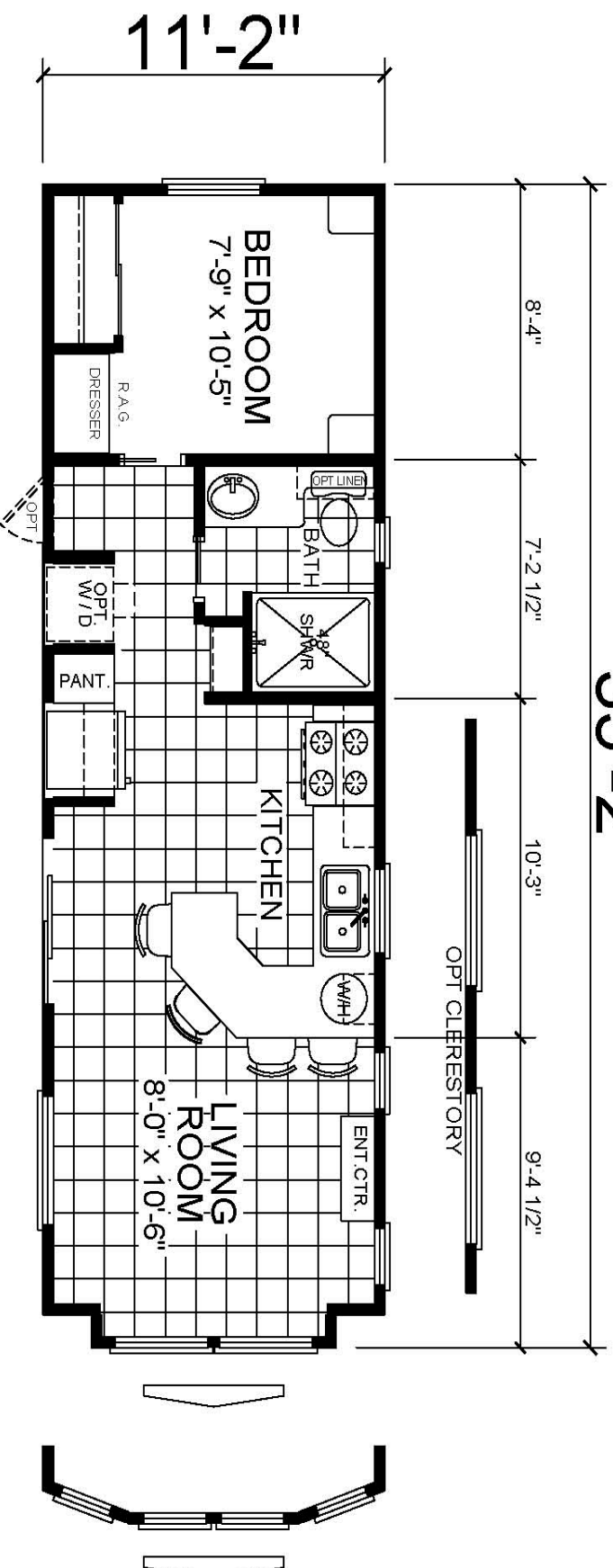
Model 507 - 399 Sq. Ft.





Athens Park Series

35'-2"



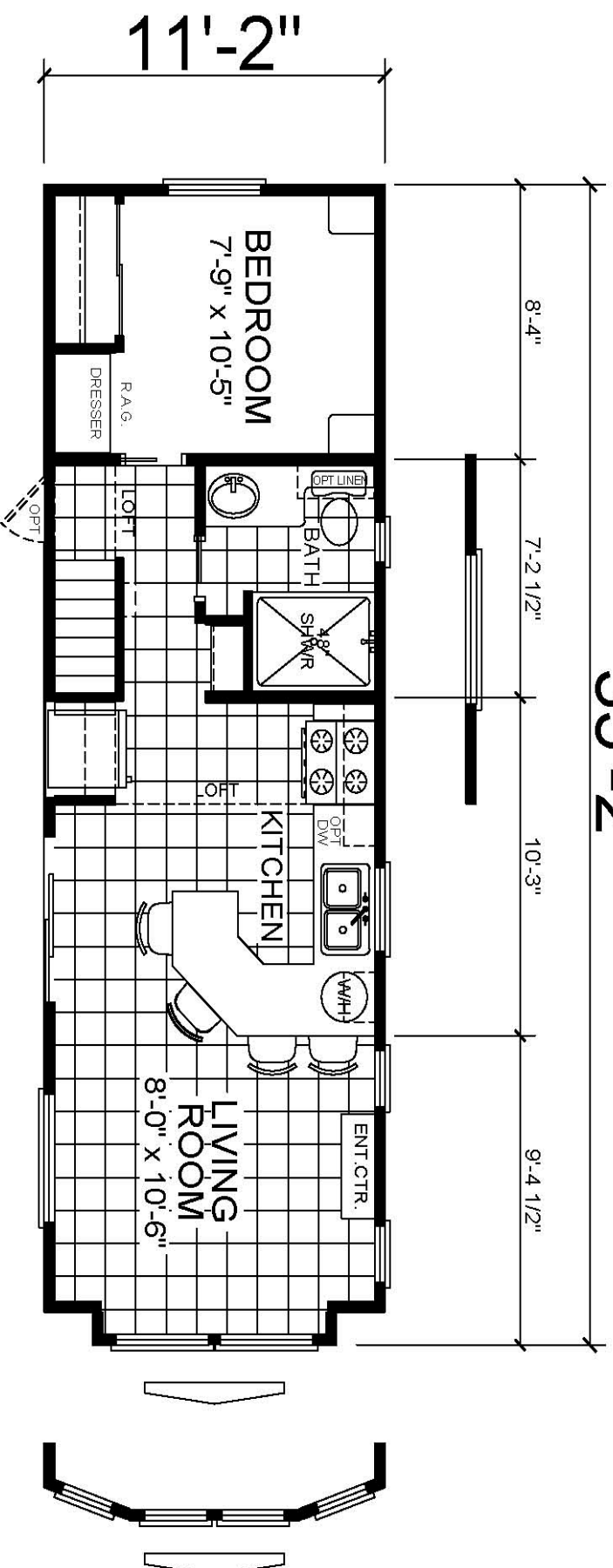
Model 508 - 399 Sq. Ft.





Athens Park Series

35'-2"



Model 508 Loft-399 Sq. Ft.





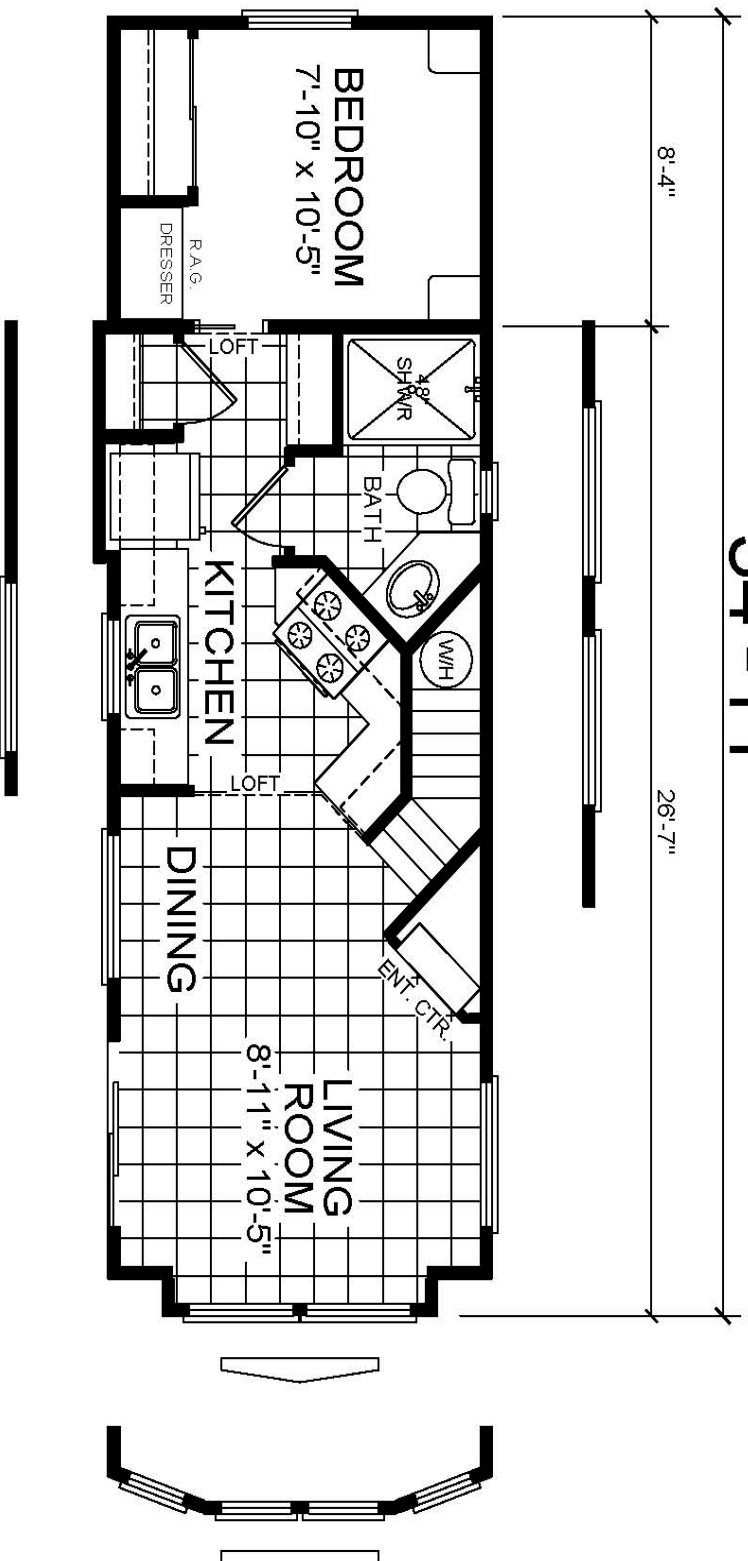
Athens Park Series

34'-1"

8'-4"

26'-7"

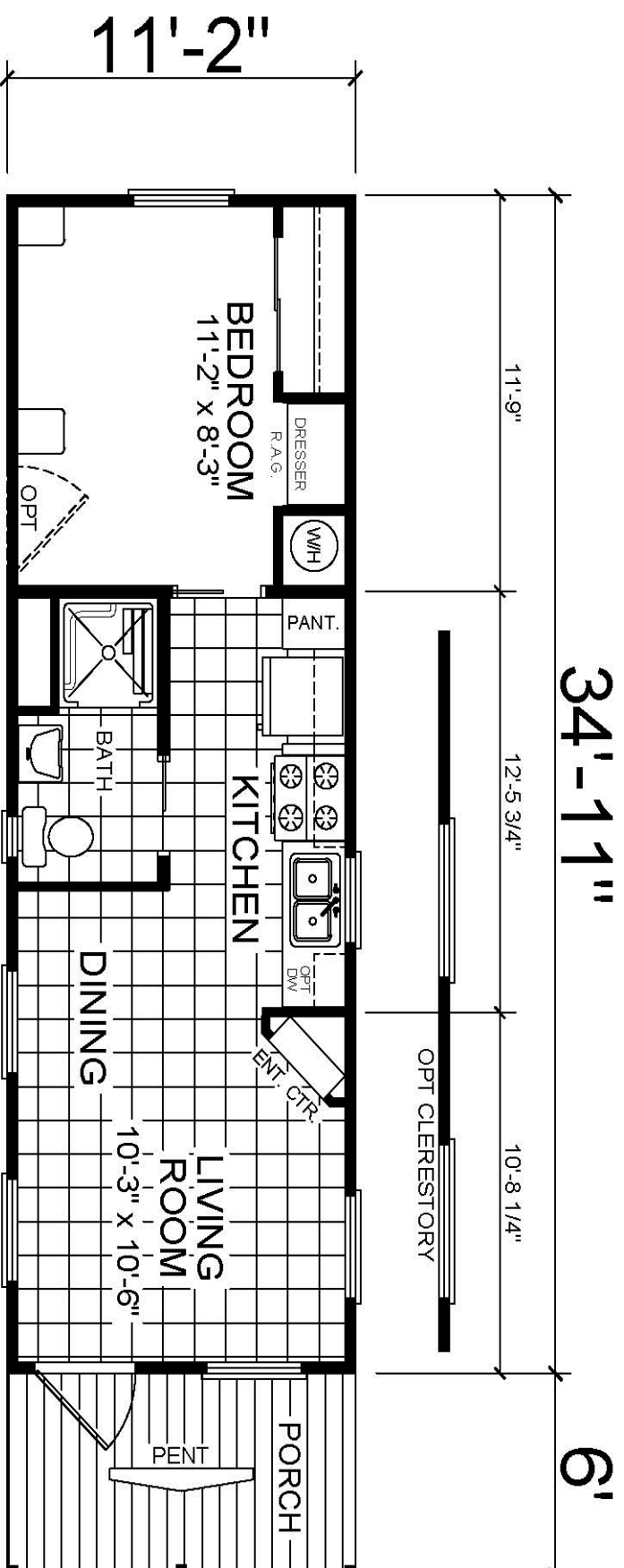
11'-2"



Model 509 Loft-399 Sq. Ft.



Athens Park Series

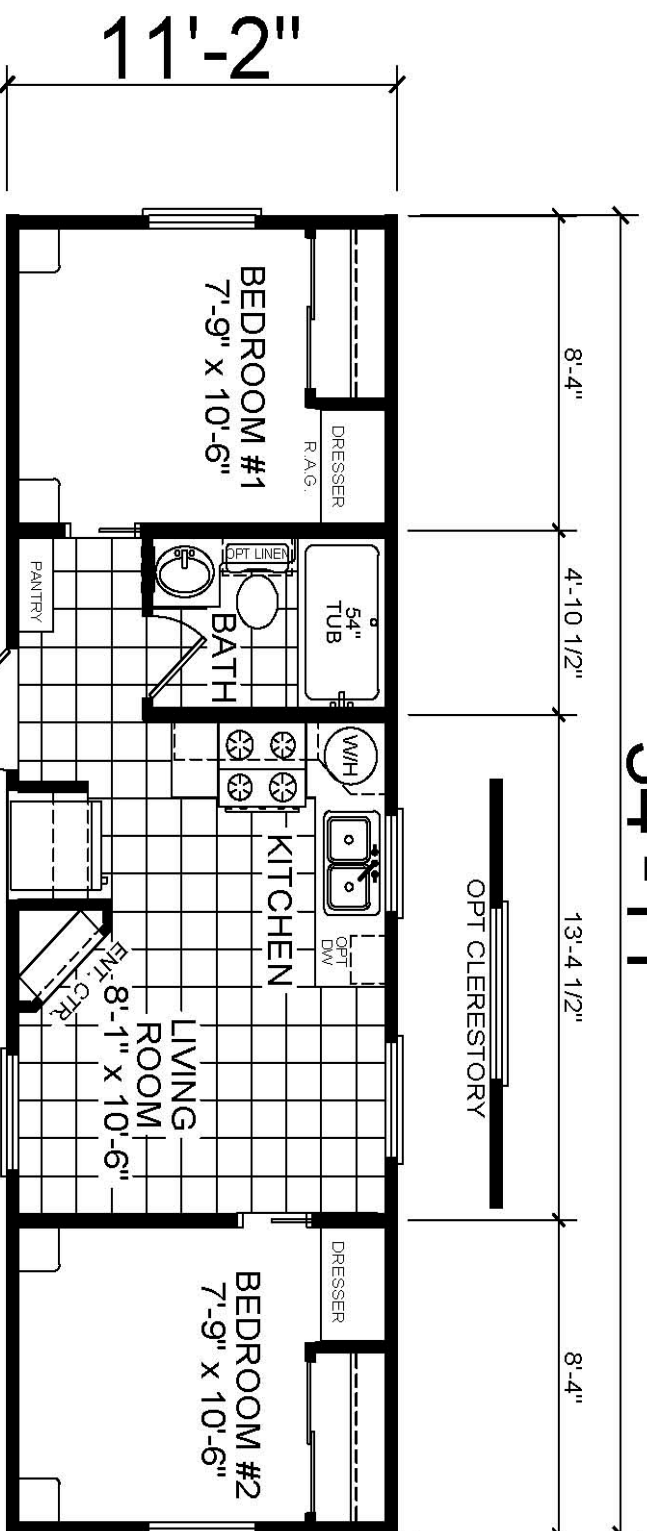


Wheelchair friendly model
Model 510 - 399 Sq. Ft.



Athens Park Series

34'-1 1"



Model 511 - 399 Sq. Ft.

REDMAN HOMES.

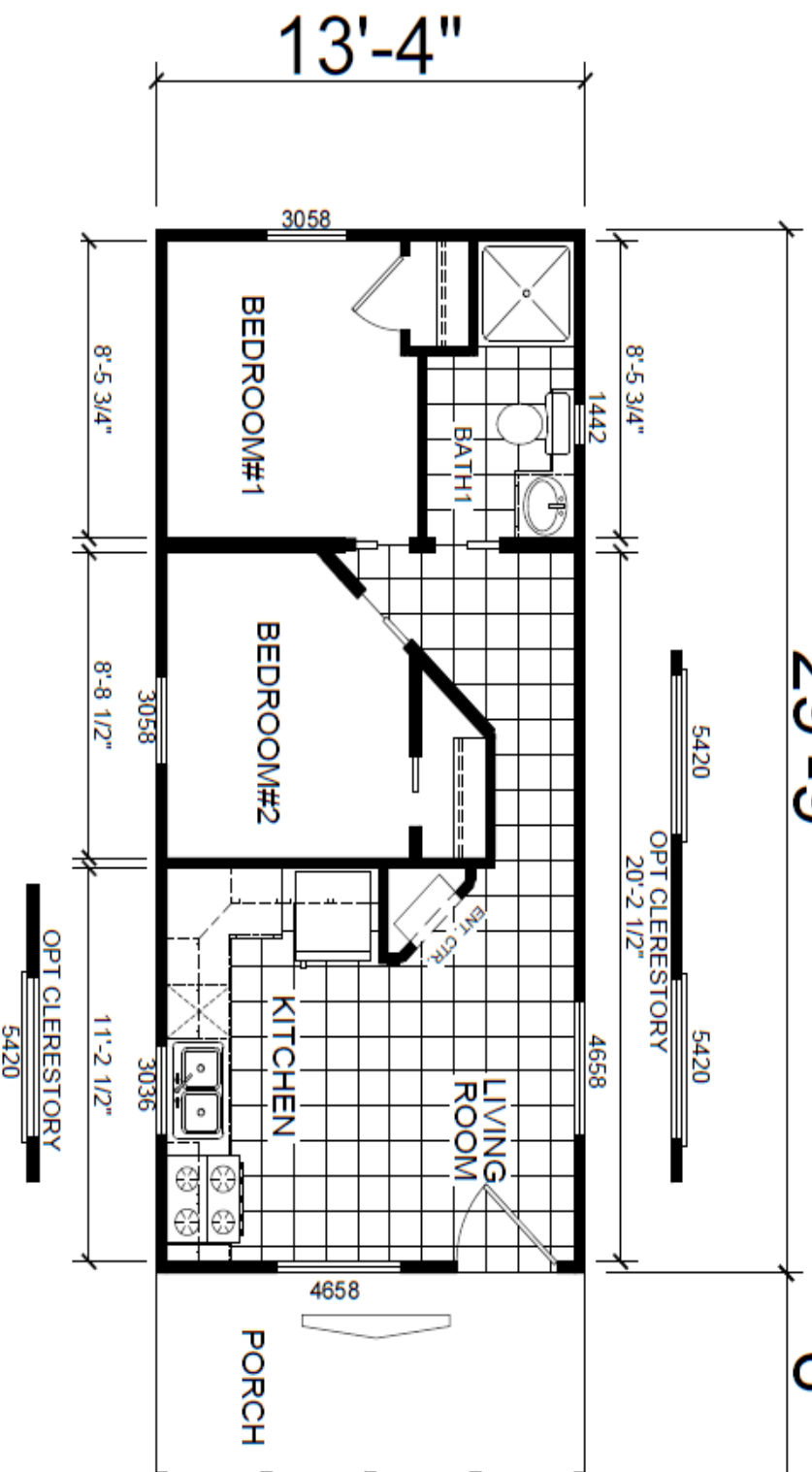




Athens Park Series

29'-9"

6'



Model 513 - 399 Sq. Ft.



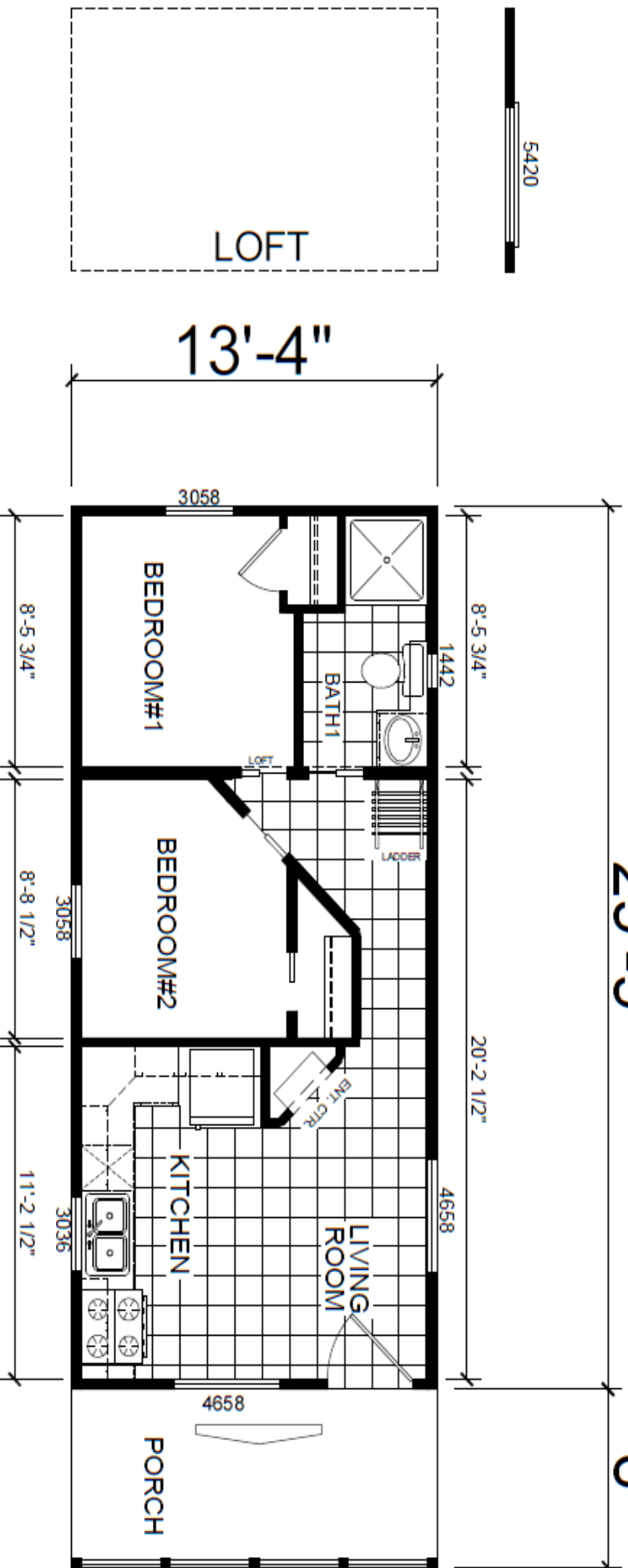
Due to continuous improvements, product specifications are subject to change without notice



Athens Park Series

29'-9"

6'



5420



Model 513SL - 399 Sq. Ft.

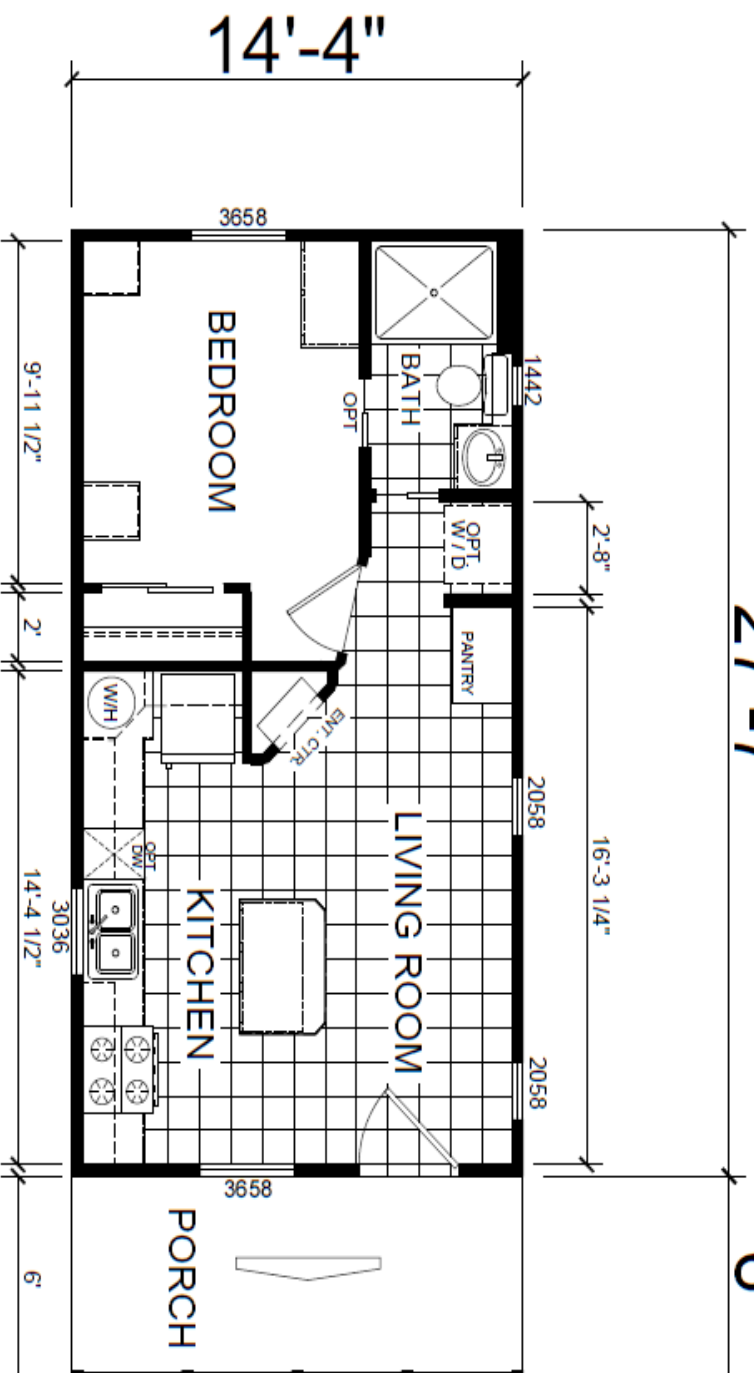


CHAMPION[®]
MANUFACTURED BEAUTIFULLY[™]

Athens Park Series

27'-7"

6'



Model 514 - 399 Sq. Ft.

REDMAN HOMES

CHAMPION®
MANUFACTURED BEAUTIFULLY™



Athens Park Series

27'-7"

6'

OPT CLERESTORY

5420

19'-3 3/4"

2058

2058

1442

LOFT

14'-4"

3658

LIVING ROOM

BEDROOM

BATH

OPT

KITCHEN

PORCH

ENT. CTR.

W/H

OPT

OVH

3036

14'-4 1/2"

2'

9'-11 1/2"

5420

OPT CLERESTORY

5420



Model 514SL - 399 Sq. Ft.



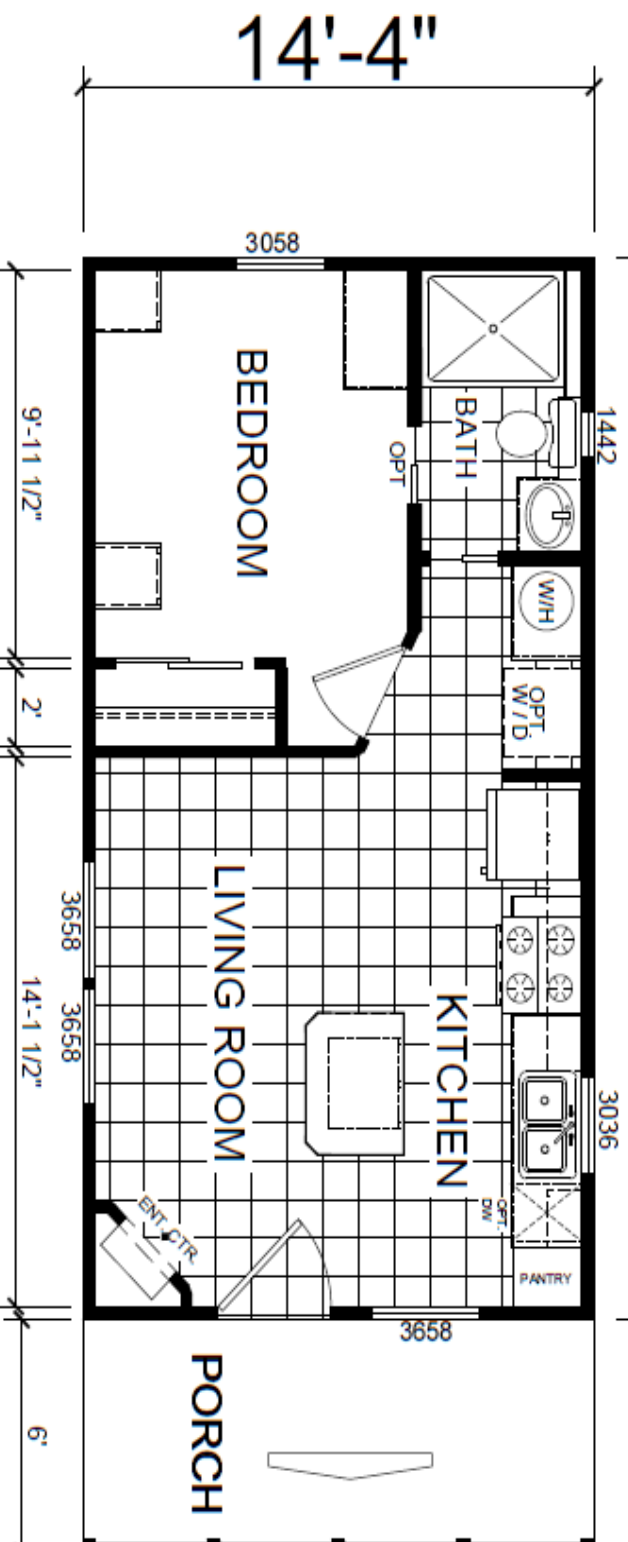
CHAMPION[®]
MANUFACTURED BEAUTIFULLY[™]

Athens Park Series

27'-4"

6'

5420
OPT CLERESTORY



Model 515 - 399 Sq. Ft.

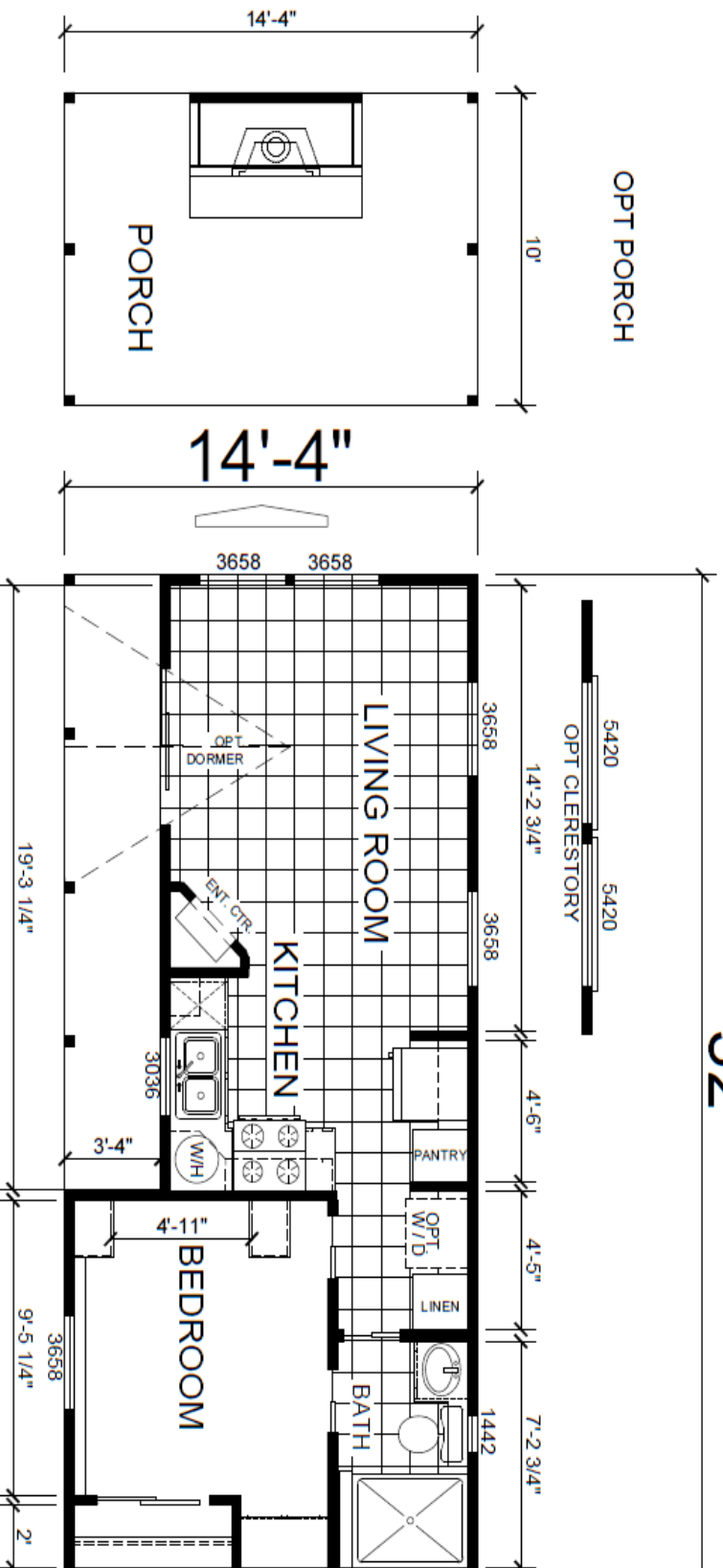
REDMAN HOMES

CHAMPION[®]
MANUFACTURED BEAUTIFULLY[™]



Athens Park Series

32'



Model 516 - 399 Sq. Ft.



2 Room Model



"Innovation in
Recreational Living"

Standard Features

Energy Saving Comfort Features:

Insulated Low E tilt and clean single hung windows
2 - 36x80 - 9 Lite steel front doors
R-22 Fiberglass insulation in roof
R-11 Fiberglass insulation in the sidewalls and floors.
Vented attic with vapor barrier
2 - Fire extinguisher
110V-8,000 BTU Heat / Air units
Energy saving house wrap around home
2- Ceiling fans with light kits

Heavy Duty Exterior Construction Features:

Metal Roof
6/12 Roof pitch
2x6 floor and 2x4 sidewall construction - 16" O.C.
Trussed roof rafters
Full length 10" steel "I" - beam frame
Cempanel Fiber-Cement siding by James Hardie
High density Sheptex (rodent proof) underbelly
Detachable hitch

Heavy Duty Interior Construction Features:

90" Sidewall height w/ extra high vaulted ceiling
Wood cabinet doors and drawer fronts
Hidden cabinet door hinges
Premium metal drawer guides and rollers
19/32" OSB T&G floor decking

Decorator Features:

Tape and textured sheetrock walls
Textured Ceiling
Mullions at most windows (grids)

Deluxe overhead lighting
Attractive patio lights
Deluxe valances
High pressure laminate countertops
Laminate edging & backsplash in Kitchen
2" blinds throughout
Hang bar & drawer bank for cloths

Convenience Features:

RVIA coded and inspected
50 Amp Electrical Service with pigtail
2 - 5 Cubic foot under counter refrigerators
2 - One piece 48" fiberglass showers
2 - 20 gallon electric water heaters
No wax linoleum flooring throughout
2 - Single bowl stainless steel sinks
Metal faucet in baths
Porcelain house type toilet
Easy touch rocker light switches
Exterior GFCI 110 volt receptacle
2 - Smoke detectors
Water shut off valves throughout
2- TV jacks

Popular Options

Skylights	Decks
AM/FM/CD stereo w/ speakers	Furniture
Microwave oven	
Clerestory dormers	

Athens Park Homes

840 W Palm Ave
Lindsay, Ca 93247
800-451-4951
559-242-5121

www.athensparkhomes.com

REDMAN  HOMES.

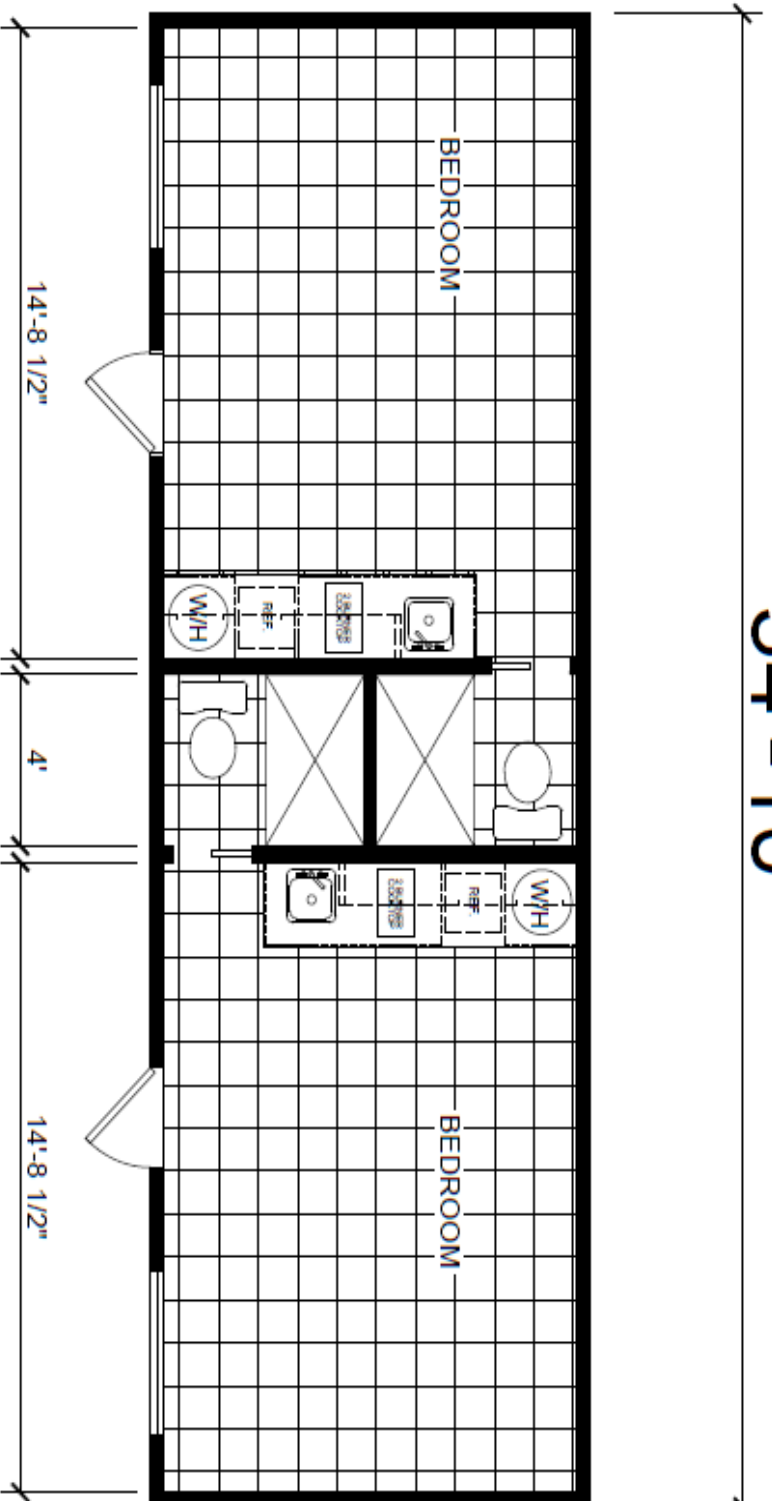


***Building Quality Park Model
RV's for over 9 Years!***

2 Room Model

34'-10"

11'-2"



Triplex 134 Model



"Innovation in
Recreational Living"

Standard Features

Energy Saving Comfort Features:

Insulated tilt and clean single hung windows
3 - 36 x80 - 9 Lite steel front doors
3 - 110V-8,000 BTU heat / air units with cut outs
R-22 Fiberglass insulation in roof
R-11 Fiberglass insulation in the sidewalls and floors.
Vented attic with vapor barrier
3 - Fire extinguisher
Energy saving house wrap around home

Heavy Duty Exterior Construction Features:

Metal roof
2x6 floor and 2x4 sidewall construction - 16" O.C.
Trussed roof rafters
Full length 10" steel "I" - beam frame
Cempanel Fiber-Cement siding by James Hardie
High density Sheptex (rodent proof) underbelly
Detachable hitch

Heavy Duty Interior Construction Features:

90" Sidewall height w/ extra high vaulted ceiling
Beautiful wood cabinet doors
Hidden cabinet door hinges
Premium metal drawer guides and rollers
19/32" OSB T&G floor decking
Custom molding & trim packages

Decorator Features:

Tape and textured sheetrock walls
Mullions at most windows (grids)

Textured Ceiling
Deluxe overhead lighting
Attractive patio light
Premium decorator valances
High pressure laminate countertops
Laminate edging & backsplash in Kitchen
2" blinds throughout
Hang bar and shelf for cloths

Convenience Features:

RVIA coded and inspected
50 Amp Electrical Service with pigtail
3 - One piece 36" fiberglass showers with curtain
1 - 40 gallon electric water heater
No wax flooring
Metal faucet in bath
Porcelain house type toilet
Easy touch rocker light switches
Exterior GFCI 110 volt receptacle
Smoke detector
Shut off valves throughout
3 - TV jacks
Single bowl stainless steel sink

Popular Options

Ceiling fans
Microwave oven
Decks
Furniture

Athens Park Homes

840 W Palm Ave
Lindsay, Ca 93247
800-451-4951
559-242-5121

www.athensparkhomes.com

REDMAN  HOMES.



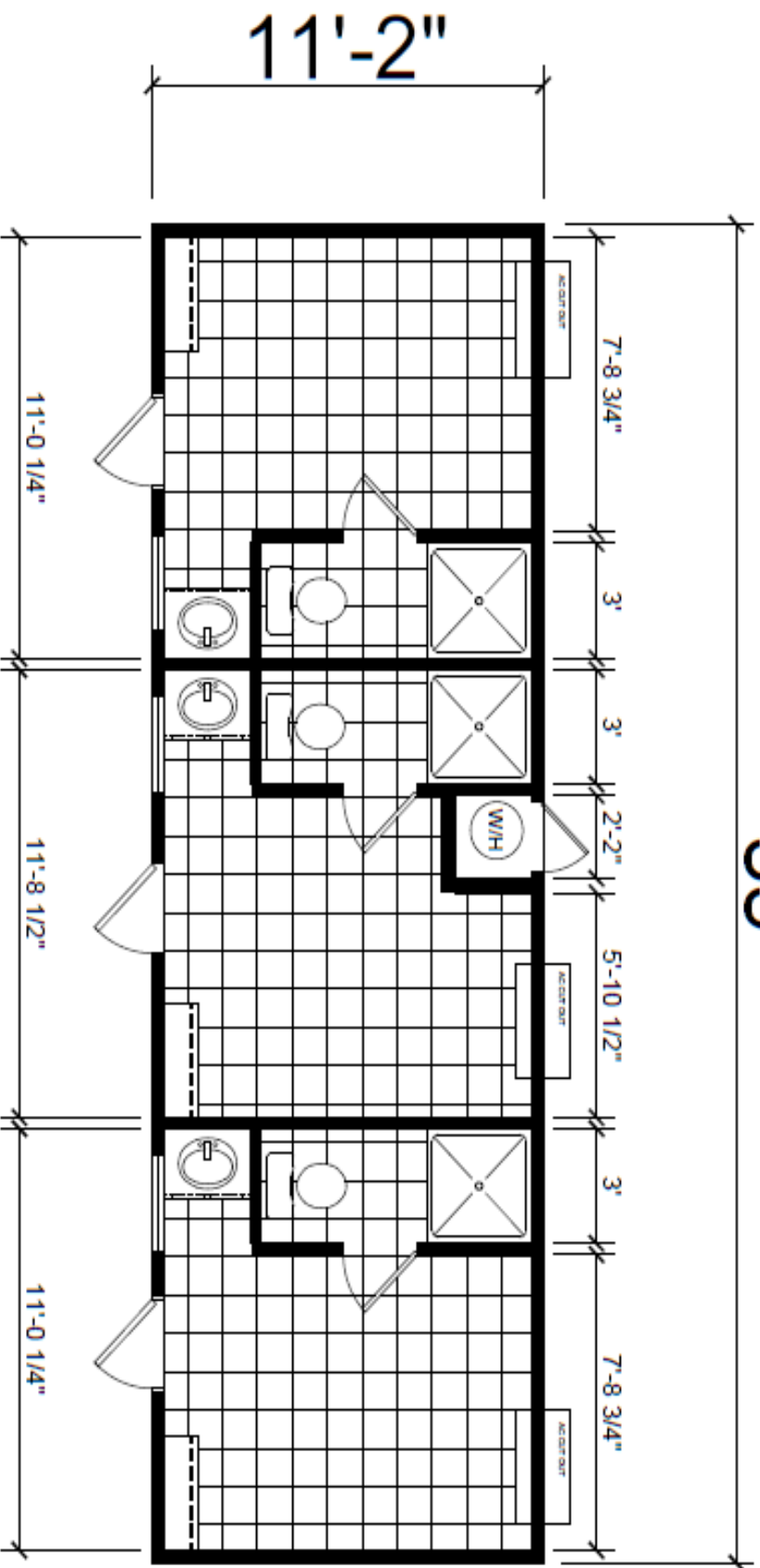
Building Quality Park Model RV's for over 9 Years!

7/21/2014

Prices and specifications are subject to change without notice

Triplex 134 Model

35'



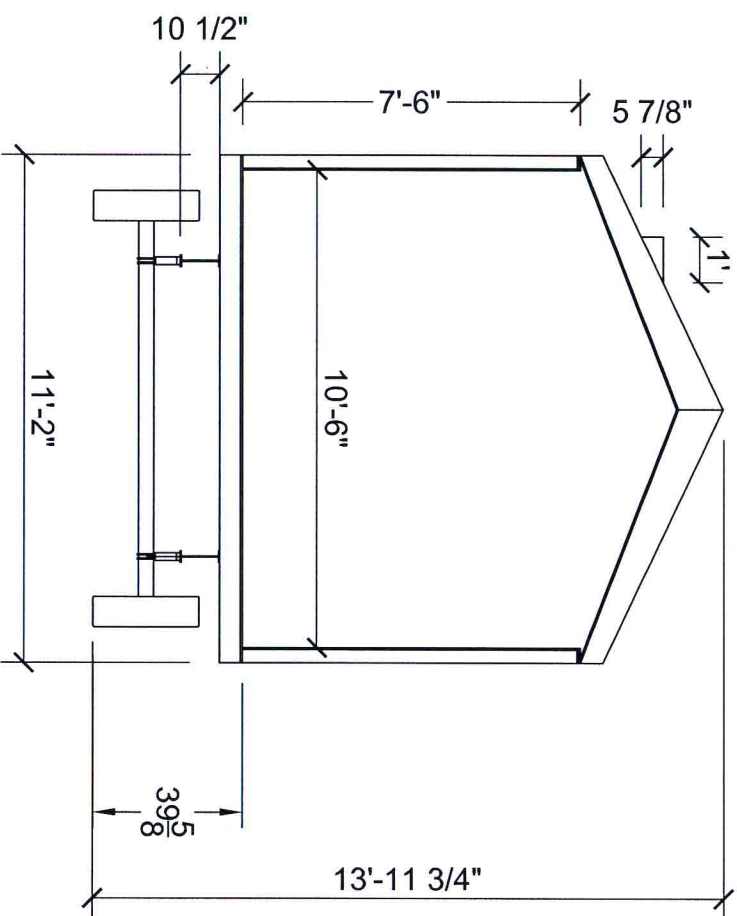
APH-134- 399 Sq. Ft.

REDMAN HOMES.

CHAMPION®
MANUFACTURED BEAUTIFULLY™

APPLICABLE MODEL #

PARK MODEL 6/12



CHAMPION

840 PALM AVE. P.O. BOX 429 LINDSAY, CA 93247

DAPIA SEAL

MODIFICATIONS

MODEL: 000-0000

Model Description

TITLE: FLOOR PLAN

SHEET: AP-101

DRAWN BY: JUSERPAS

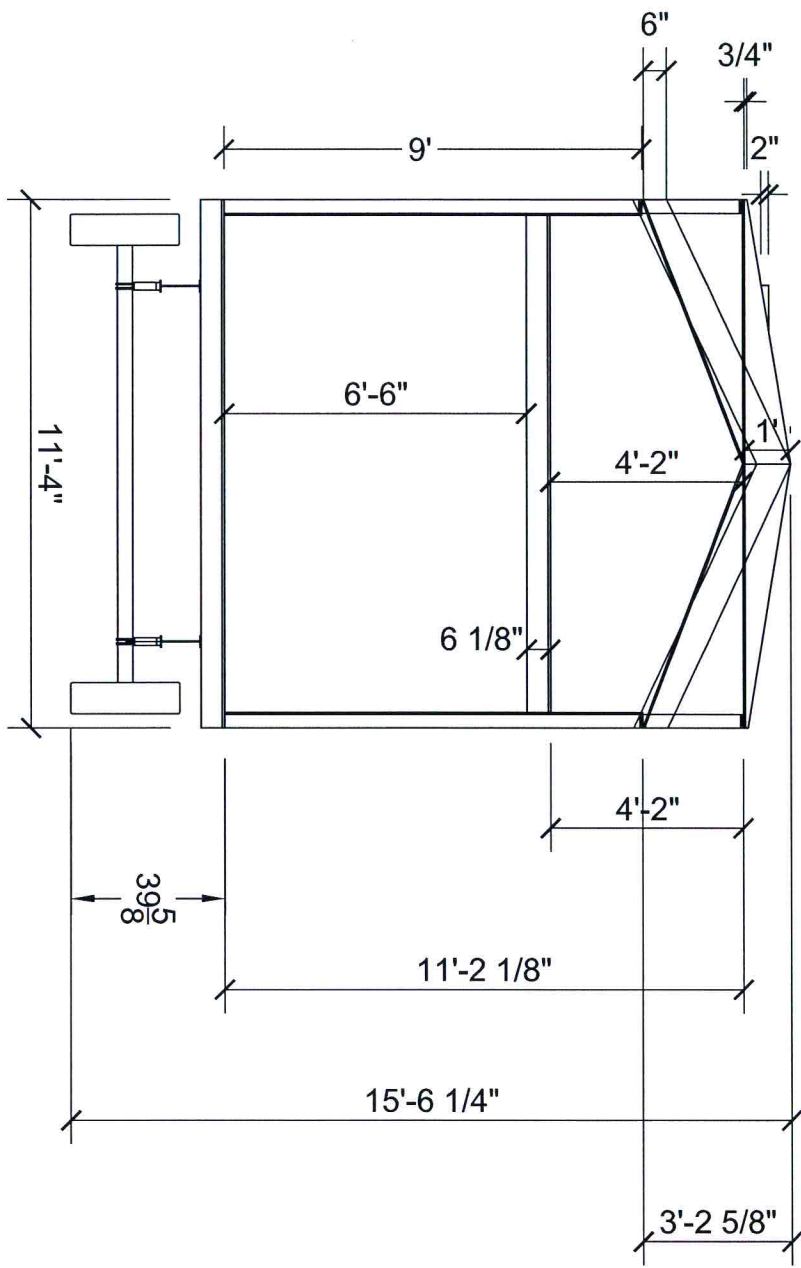
DATE: 11/14/12

SCALE: 1/8" = 1'-0"

PROPRIETARY AND CONFIDENTIAL
THESE DRAWINGS AND SPECIFICATIONS ARE ORIGINAL,
PROPRIETARY AND CONFIDENTIAL MATERIALS OF CHAMPION.
COPYRIGHT © 1976-2008 BY CHAMPION

APPLICABLE MODEL #

PARK MODEL 6/12 W/STORAGE LOFT



DAPIA SEAL

MODIFICATIONS

MODEL: 000-0000

Model Description

TITLE:

FLOOR PLAN

SHEET:

AP-101



840 PALM AVE. P.O. BOX 429 LINDSAY, CA 93247

PROPRIETARY AND CONFIDENTIAL
THESE DRAWINGS AND SPECIFICATIONS ARE ORIGINAL
PROPERTY AND CONFIDENTIAL MATERIALS OF CHAMPION.
COPYRIGHT © 1976-2006 BY CHAMPION

DRAWN BY: J.SERPAS

DATE: 11/29/06

SCALE: 1/8" = 1'-0"